

**ADVANCE IDENTIFICATION OF CAROLINA BAYS
FOR SOUTH CAROLINA WETLANDS PROTECTION**

Planning Summary Document

**Prepared for:
U.S. Environmental Protection Agency
Region 4, Atlanta, Georgia
Wetlands Protection Division**

Grant Number: CD994920-96-0

**Prepared by:
S.C. Department of Natural Resources
Land, Water and Conservation Division
1201 Main Street, Suite 1100
Columbia, South Carolina 29201**

March 15, 1999

PREFACE

This document has been funded wholly or in part by the United States Environmental Protection Agency under assistance agreement CD994920-96-0 to the South Carolina Department of Natural Resources. The contents of this document do not necessarily reflect the views and policies of the Environmental Protection Agency, nor does mention of trade names or commercial products constitute endorsement or recommendation for use.

[48 FR 45062, Sept. 30, 1983; 49 FR 38945, Oct. 2, 1984]

INTRODUCTION

Wetlands are ecosystems valuable for regulating surface and ground water hydrology by storing and gradually releasing flood water; maintaining water quality by storing nutrients and reducing sediment load and erosion; providing fish and wildlife habitat for food and cover yielding very high biological productivity; and serving human populations with recreational and aesthetic values (Mitsch and Gosselink, 1986).

Total wetlands in the United States are estimated to have originally amounted to about 215 million acres, of which only 108 million acres remained by the 1950s, and only 99 million acres remained by the mid-1970s, a loss of 54% (Frayner et al, 1983; Tiner, 1984). Nationally, 2.6 million acres of wetlands were lost in the decade between the mid-1970s and the mid-1980s, of which 2.5 million acres (98%) were inland freshwater wetlands (Dahl and Johnson, 1991). Nearly half (47%) of all wetlands in the conterminous United States (49 million acres) are located in 10 southeastern states, including South Carolina (Hefner et al, 1994). Historically, South Carolina has lost 28% of its original wetlands to human development and conversion of the landscape.

The U.S. Environmental Protection Agency (EPA) has federal authority over human activity impacting jurisdictional wetlands and is involved in the Clean Water Act (CWA), Section 404, as a reviewer of permit applications submitted to the U.S. Army Corps of Engineers (COE). Section 404 guidelines require use of least environmentally damaging practicable alternatives, avoidance of significant degradation to the aquatic resources, minimization of project impacts, and compliance with water quality and endangered species requirements.

The EPA established an Office of Wetlands Protection in 1986 to provide leadership in building a broad-based effort to protect our nation's wetlands, recognizing that a truly effective program of wetlands protection must be supplemented by non-regulatory approaches through cooperation of federal, state and local agencies, environmental groups, developers, the scientific community and the public. Section 404 is not a comprehensive mechanism for wetlands protection since some wetlands damaging activities (drainage and ground water pumping) occur without discharging dredged or fill material into the nation's waters, and thus not regulated (USEPA, 1988).

Advance identification (ADID) of wetlands is a proactive planning process authorized by Section 404 regulations (40 CFR S230.80) which allows the EPA in cooperation with the COE and the states to collect information on the natural values of wetlands. This information is evaluated by the agencies to determine which wetlands in the ADID study area are of ecologically high value and should be protected from future land use activities. It provides the regulated community with an indication of whether a permit is likely to be approved. When implemented at the local level, ADID results can discourage permit applications to modify high value wetlands, saving time and money.

The ADID process typically involves state and other natural resource agencies in the study of the natural characteristics and functions of specific wetlands. This study may include flood water storage, erosion control, sediment retention, ground water recharge/discharge, water quality enhancement, nutrient retention, food chain support, wildlife and fishery habitats, waterfowl usage, recreational activity, and heritage values. The impact of various land use activities on these wetlands is also evaluated.

The results of ADID studies are published in a Planning Summary Document (PSD) and made available to the public and the regulated community (USEPA, 1991). The PSD contains descriptive information and map data characterizing the wetlands evaluated. Preliminary findings are summarized in the PSD which is circulated for review by federal, state and local agencies and usually is accompanied by a public notice of publication to heighten awareness of the study. Copies of the final PSD are held by all participating agencies and made available to the regulated community and the general public for use when permits are received within the ADID study area.

Between 1989 and 1998, the South Carolina Department of Natural Resources received funding from the EPA, Region 4 (Atlanta, Georgia), to conduct an ADID of Carolina Bay wetlands in the coastal plain of South Carolina. Carolina Bays were selected for advance identification because they are unique wetlands that had been identified in previous studies as containing valuable habitat for significant flora and fauna of the state. This PSD summarizes ADID activities over the past 10 years, including:

- (1) previous studies,
- (2) identification and inventory of candidate bays,
- (3) spatial and tabular database development, and
- (4) image graphics and awareness outreach.

PREVIOUS STUDIES

Carolina Bays are shallow, poorly drained, elliptical (oval), depression features found throughout the Atlantic coastal plain from northeast Florida to southeast New Jersey (Prouty, 1952; Bennett and Nelson, 1991). The Carolina Bay was originally called 'pocosin' which is the Indian word for "swamp on a hill." Bay swamps were so-called due to an abundance of bay trees. Carolina Bays are oriented in a northwest-southeast, shoreline-

perpendicular direction and parallel to one another. They are characterized by nine (9) distinctive features which may be exhibited totally or in part with any given bay. (See Figure 1: "Pee Dee Islands" bays in Marion County.)

- (1) elliptical or oval shape,
- (2) northwest-southeast orientation,
- (3) parallel axes,
- (4) sand rims raised above general level,
- (5) interior surfaces below general level,
- (6) differences between interior and surrounding soils,
- (7) relatively shallow depths,
- (8) flat sandy bottoms beneath interior fill, and
- (9) independence of inflowing or outflowing streams.

Bays share various features with other isolated wetland types, including floristic composition, distribution of vegetation, substrate and origin. In North America, geomorphic features possibly related functionally or formationally to Carolina Bays include upper Midwestern prairie potholes, Alaskan coastal plain clamshell ponds, northern U.S. bog and fen complexes, California vernal pools, and Atlantic coast interdune ponds.

Once an estimated 500,000 bays of all sizes occupied the Atlantic coastal plain, of which 140,000 were moderate to large in size (Prouty, 1952). This estimate (3.5 bays per square mile) may be high due to its basis upon Bladen County, North Carolina, an area of very high Carolina Bay density (Bennett and Nelson, 1991).

Historically, South Carolina is estimated to have more than 4000 Carolina Bays of which 2783 were two acres or larger (Bennett and Nelson, 1991; Schalles, 1989). However, Carolina Bays were probably never as abundant as believed in the past. These estimates are based on surveys of the Savannah River Site in Aiken and Barnwell counties, an area of relatively high bay density (1.5 bays per square mile).

A false sense of abundance and historic disdain for wetlands has likely accounted for lack of concern over abuse and alteration of these systems (Bennett and Nelson, 1991). However, two phenomena of bays have led to renewed interest in their characterization and preservation. First, as isolated wetlands, bays are potential refuges for numerous wetland species within a given geographic area. Often these species may be entirely restricted to local bays. Second, bays historically have received little formal study, resulting in many gaps in knowledge of species distribution. These species include rare plants, amphibians (flatwoods salamander and Carolina gopher frog), reptiles (water snakes, yellow-bellied turtles and alligators), wading birds and mammals (black bear).

In 1983, the Heritage Trust Program (HTP) initiated a survey of Carolina Bays in South Carolina's coastal plain (Bennett and Nelson, 1991). Using both aerial photography and field inspection, the study recorded ecological and geomorphological characteristics

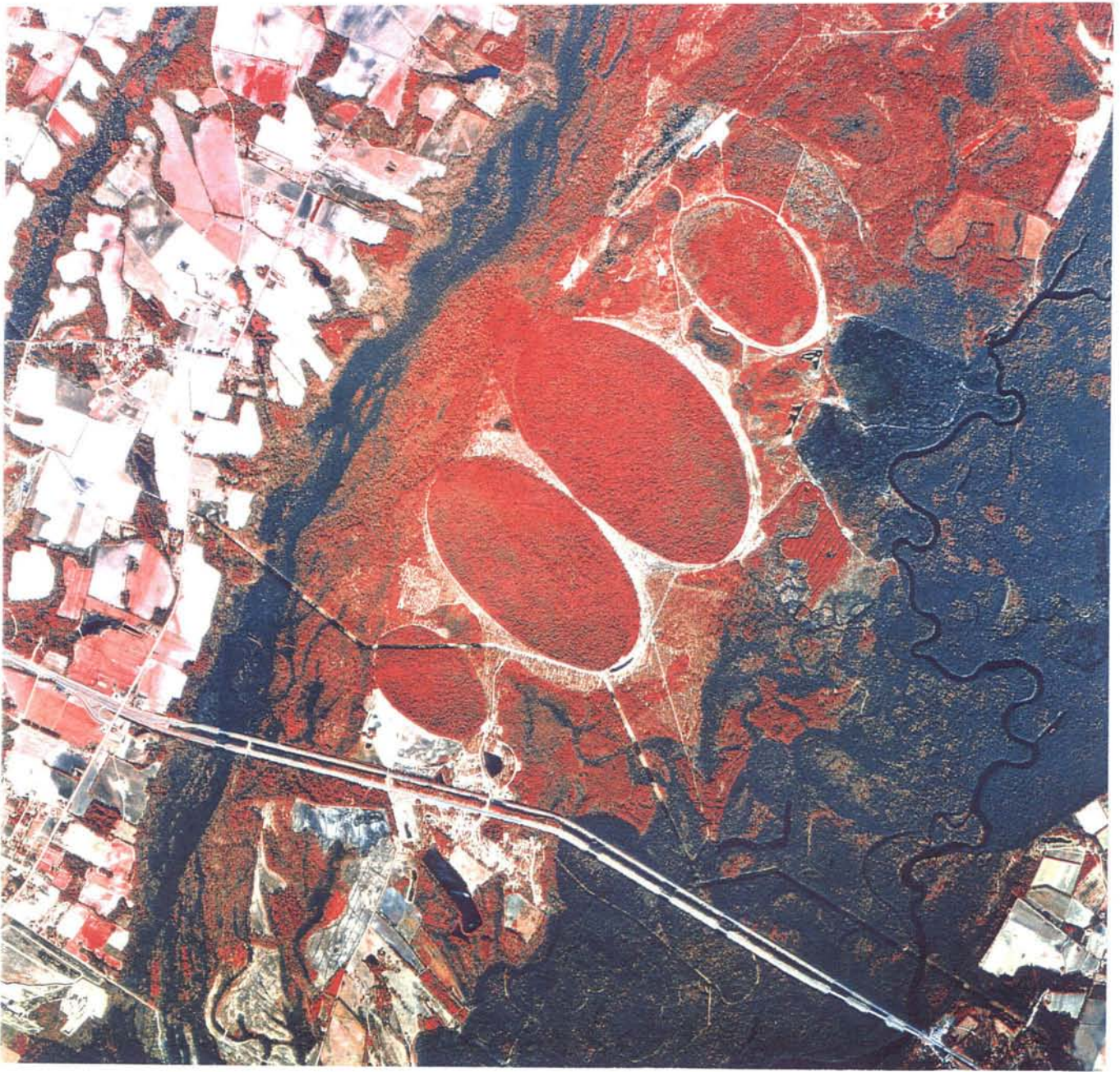


Figure 1: Pee Dee Islands Bay Complex - Marion County, SC

of bays, assessed surrounding land use and disturbance and identified the least altered and most significant bays for inclusion as HTP protection projects.

U.S. Department of Agriculture black and white aerial photography from 1972 to 1983 (mainly 1979-1981) was used to identify 2,651 bays within 29 counties of South Carolina's coastal plain, excluding the Savannah River Site which was inventoried separately under the authority of the U.S. Department of Energy. Bays smaller than two acres were omitted due to confusion with other small, non-elliptical, wet features of the landscape. From the photos, percent of disturbance or alteration, the presence of overlapping bays, sand rim extent and surrounding land use were recorded for each bay. Vegetation type could not be identified from the aerial photographs.

Field survey of the Carolina Bays was conducted from 1983 to 1988. Generally, bays estimated from the aerial photographs as less than 30% disturbed were field inspected for potential protection under the Heritage Trust Program. Of the total 2651 bays, 613 (23%) were identified for ground survey. The degree of disturbance or alteration and other attributes recorded from the aerial photographs were verified during field inspection. Other characteristics that could not be obtained from the photographs including surface water depth, plant species in canopy/shrub/herbaceous layers, and presence of rare plants were recorded. In addition, a general protection priority recommendation was made for each bay visited based on integrity of the bay, the existence of natural communities, the presence of threatened or endangered plant species and the presence of intact sand rims.

During the survey, eleven (11) natural ecosystems were found in South Carolina's bays, adapted from Cowardin *et al.* (1979). Eight are represented in the candidate bay subset and are recorded in the BAYTYPE attribute of Appendix 1.

I - Terrestrial Systems:

xeric sandhill scrub
oak-hickory forest

II - Palustrine Systems:

non-alluvial swamp
pond cypress pond
pond cypress savannah
depression meadow
pocosin
pond pine woodland
bay forest
shrub border

III - Aquatic Systems:

open water lake.

Thirty-six (36) plant species of concern were found during on-site inspection, and were added to the Heritage Trust database. Twenty-three (23) were rare, threatened or endangered plant species include:

Little bur-head (<i>Echinodorus parvulus</i>)	Quill-leaf (<i>Sagittaria isoetiformis</i>),
Spoonflower (<i>Peltandra sagittaeifolia</i>)	Sarvis-holly (<i>Ilex amelanchier</i>),
weedy annual mustard (<i>Teesdalia nudicaulis</i>)	Boykin's lobelia (<i>Lobelia boykinii</i>)
Rose coreopsis (<i>Coreopsis rosea</i>)	Savanna butterweed (<i>Helenium pinnatifidum</i>)
Robbin's spike-rush (<i>Eleocharis robbinsii</i>)	Tracy's beak-rush (<i>Rhynchospora tracyi</i>)
perennial sedge (<i>Rhynchospora inundata</i>)	Baldwin's nut-rush (<i>Scleria baldwinii</i>)
(<i>Stillingia aquatica</i>)	(<i>Hypericum harperi</i>)
Venus' fly-trap (<i>Dionaea muscipula</i>)	Leather-leaf (<i>Cassandra calyculata</i>)
Pond-spice (<i>Litsea aestivalis</i>)	Awn-petaled meadow beauty (<i>Rhexia aristosa</i>)
Creeping seedbox (<i>Ludwigia spathulata</i>)	perennial grass (<i>Anthaenantia rufa</i>)
perennial grass (<i>Amphicarpum muhlenbergianum</i>)	annual grass (<i>Paspalum dissectum</i>)
Canby's dropwort (<i>Oxypolis canbyi</i>)	

The number of bays per county ranged from 3 in Chesterfield County to 410 in Horry County. Bays tend to be larger in the lower coastal plain than in the upper coastal plain, generally decreasing in size inland (Bennett and Nelson, 1991). Mean long axis length by county ranged from 684 feet in Lexington County to 5,094 feet in Georgetown. Twenty-five (25) very large bays, with long axes greater than 10,000 feet, were found in eleven (11) counties. Twenty-two (22) of these bays were located northeast of the Santee River in the northern coastal plain. The largest bay, found in Dillon County, measured 18,748 feet and had been converted to agriculture.

A major conclusion of the study was that there are fewer bays in the state than previously thought and most of them had been significantly altered. From a population of 2651 Carolina Bays, 97% exhibited some type of disturbance, with approximately 81% exhibiting multiple disturbances. Bays in exemplary condition with no disturbance are rare (Bennett and Nelson, 1991). Further, bays tended to be either relatively intact (10% or less disturbed) or almost totally altered (90% or more). Those only with moderate disturbance were less common. Figure 2 contains examples of an intact bay (Woods Bay State Park) and a highly disturbed bay that has been converted to agriculture (Dials Bay) located in close proximity.

Field inspection of the 613 targeted bays showed that 219 bays remained relatively intact (supporting recognizable wetland vegetation and exhibiting little alteration or disturbance). An additional 234 had been functionally altered or disturbed between the date of the aerial photography and the date of the field inspection (average 7 years) and 160 bays had experienced total alteration which was not evident in the aerial photography. These altered bays contained dense canopies of loblolly pine, water oak, sweetgum and other invasive, early succession species and had been drained and probably logged. They are considered "bay regrowth" communities.

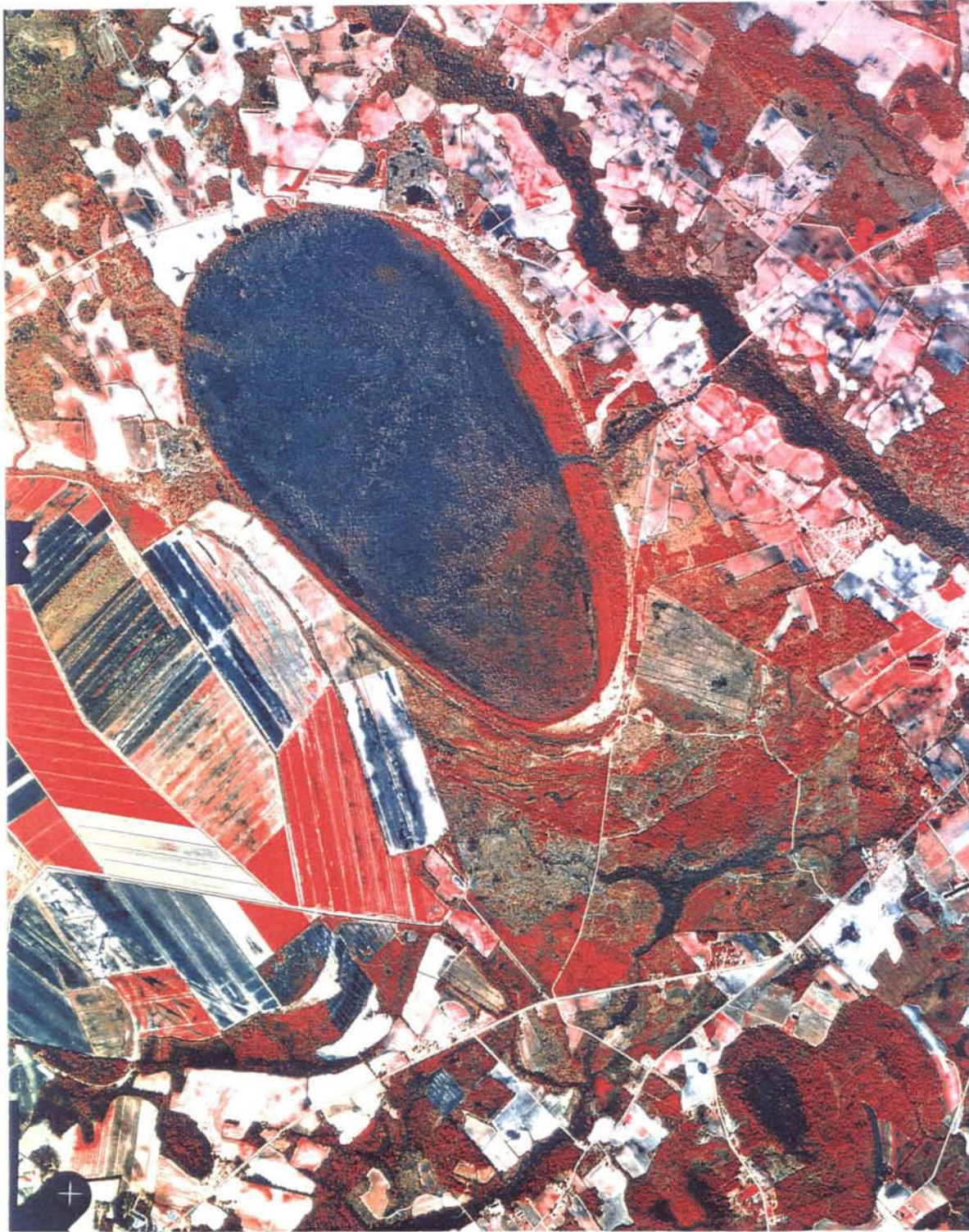


Figure 2: Intact and Disturbed Bays - Woods Bay State Park and Dials Bay

The types of disturbance are numerous and include:

- (1) ditches/channelization,
- (2) row crops/agriculture,
- (3) pine plantations,
- (4) logging,
- (5) roads,
- (6) residential and commercial development,
- (7) transmission rights-of-way, and
- (8) farm ponds.

Upon field visitation, ditches were determined to be more pervasive than observed in air photo interpretation. Ditches or ditch scars were found in virtually every bay visited which were often not apparent on aerial photographs due to canopy closure or ditch age. Some ditches may have functioned to drain uplands into the bay, however, most were designed to drain the bay in order to facilitate agriculture, forestry or other uses of the land. Since no attempts have been made to restore altered bays (at the time of this report), it is unknown whether these systems can be reclaimed (Bennett and Nelson, 1991).

Upper coastal plain bays were generally found to be more highly disturbed than lower coastal plain bays. The northeastern upper coastal plain region of the South Carolina had experienced the highest mean estimated percent disturbance (55%). As indicated by land use mapping and impact assessment studies, this is likely due to draining and clearing for agriculture which historically has been a major impact to native habitats in this area.

Based on this study, specific resource management strategies were developed. First, the 219 relatively intact Carolina Bays were allocated a high priority status for protection since they are unique wetlands and may provide habitat for rare plants and animals. Second, 36 wetlands protection projects were approved for the Heritage Trust Program. At the time of this report, all or portions of seven (7) bays or bay complexes have been acquired or registered by the HTP (Bennett and Nelson, 1991: p. 68).

IDENTIFICATION AND INVENTORY OF CANDIDATE BAYS

The objective of the advance identification (ADID) is to identify and characterize bays of high quality and value as "candidates" for protection. Given the wealth of information generated by the Heritage Trust Program study, discussed in the previous section, no further primary data collection was needed to inventory Carolina Bays in South Carolina. From the original 2,651 documented bays of two acres or larger, 219 bays had been identified that were relatively intact and, therefore, were potential candidate bays. However, additional aerial photography interpretation and field survey were required to verify the status and condition of the bays.

Several criteria were used to evaluate and classify each of the 219 bays as final protection candidates. The criteria included the presence of:

- (1) hydric soils;
- (2) hydrophytic vegetation;
- (3) an intact hydrological regime; and
- (4) a relatively low degree of disturbance within the bay.

Several otherwise non-candidate bays were elevated to candidate status based upon some unique characteristic.

Each of the 219 bays was evaluated by biologists from the Heritage Trust Program and by the state soil scientist to verify their condition. Several methods or combination of methods were employed in the assessment including:

- (1) comparison of survey records to USDA Natural Resources Conservation Service (NRCS) county soil surveys;
- (2) comparison of survey records to vegetation types classified from National Aerial Photography Program (NAPP) 1989 color infrared photography;
- (3) comparison of survey records to U.S. Fish and Wildlife Service (FWS) National Wetlands Inventory (NWI) interpretation of bay hydrology and vegetation;
- (4) estimation of disturbance from aerial photography analysis; and
- (5) field inspection.

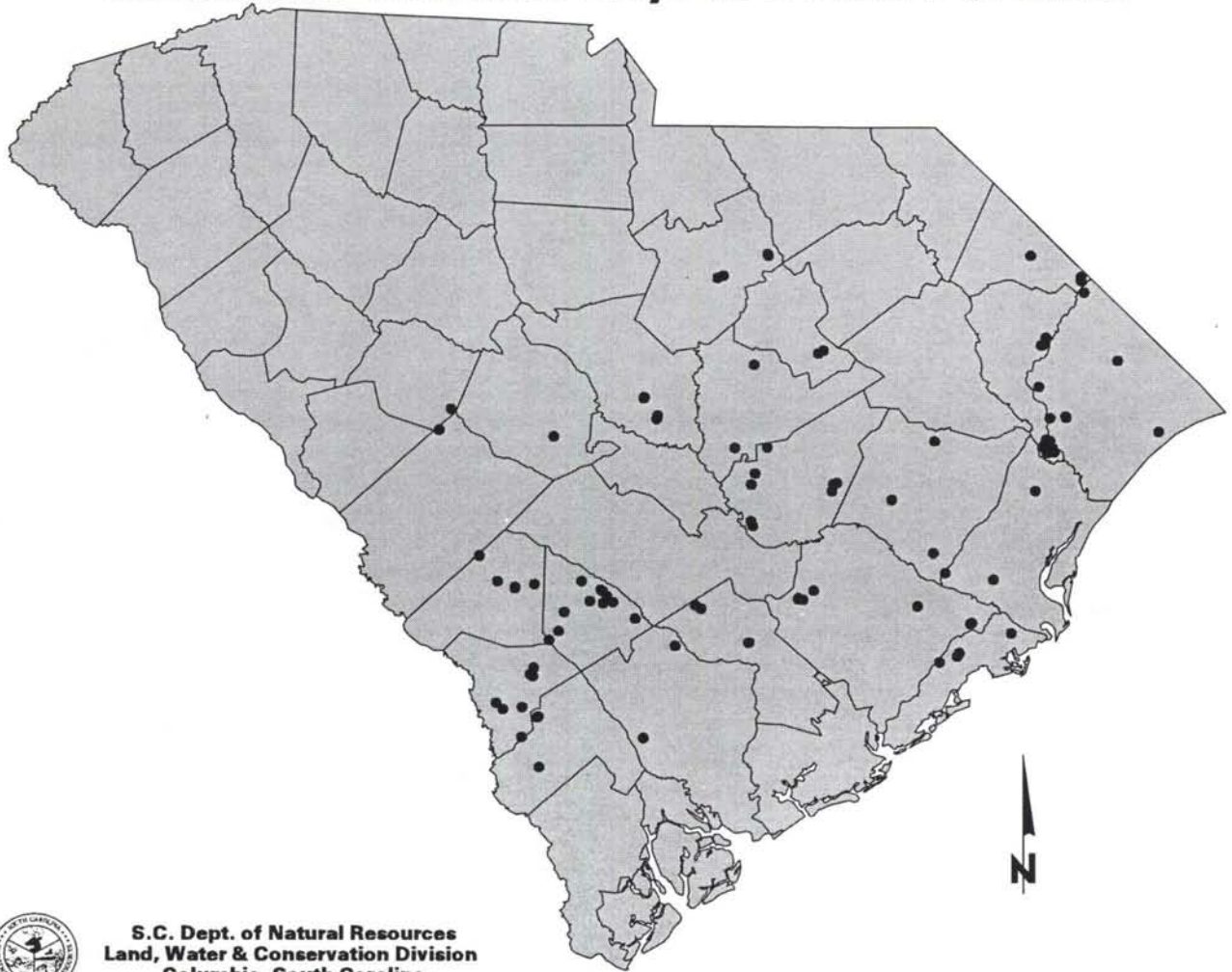
Following this process, the number of viable bay candidates for high-priority protection was reduced from 219 to 165 bays (109 individual bays and two (2) bay complexes containing a total of 56 bays).

SPATIAL AND TABULAR DATABASE DEVELOPMENT

The 165 candidate bays were identified on U.S. Geological Survey 7.5 minute topographic quadrangles during field survey. Fifty-six (56) of the bays were associated with two bay complexes that were plotted as two (2) locations. However, ecological characteristics for all 165 candidate bays were entered into a dBase electronic tabular data base. Center points for the 109 individual bays and two (2) bay complexes were digitized from the topographic maps and stored in an Arc/Info geographic information system (GIS) database (Figure 3). A small subset of the bay characteristics attribute data were converted from dBase to the Info relational data base management system and linked to the spatial center point GIS data base (Table 1).

The entire tabular dBase data file was converted to Wordperfect format which is attached as Appendix 1. This file contains records for each of the 165 candidate bays and includes specific bay characteristics such as bay type, length, surrounding land use,

Candidate Carolina Bays in South Carolina



**S.C. Dept. of Natural Resources
Land, Water & Conservation Division
Columbia, South Carolina**

Figure 3: Digitized Center Points for Carolina Bays in South Carolina

**Table 1:
Location Information for Candidate Carolina Bays**

<i>Bay#</i>	<i>BayID</i>	<i>County</i>	<i>Quadrangle</i>	<i>UTM-Easting</i>	<i>UTM-Northing</i>
1	1782142923	Aiken	Ridge Spring	441220	3742043
2	1780661122	Allendale	Bull Pond	461988	3642866
3	1783282220	Allendale	Solomons Crossroads	471232	3630470
4	1783262306	Allendale	Barton	471415	3641305
5	1780662031	Allendale	Bull Pond	464506	3640524
6	1780161521	Allendale	Allendale	475305	3652610
7	1783223414	Allendale	Allendale	474244	3653317
8	1780161610	Allendale	Allendale	475646	3655671
9	2780112418	Bamberg	Bamberg	499720	3683963
10	2780112832	Bamberg	Midway	504146	3679482
11	2781033531	Bamberg	Olar	484524	3668970
12	2780523224	Bamberg	Bamberg	495823	3679841
13	2781053115	Bamberg	Olar	481152	3665738
14	2782771821	Bamberg	Branchville South	512256	3673500
15	2780702223	Bamberg	Olar	486567	3675872
16	2780112434	Bamberg	Midway	500591	3679098
17	2780113227	Bamberg	Midway	501957	3681585
18	2780112620	Bamberg	Midway	500451	3683445
19	2780501822	Bamberg	Bamberg	492793	3687098
20	1780251822	Barnwell	Blackville	475854	3686030
21	1781011517	Barnwell	Blackville	468799	3684537
22	1781011519	Barnwell	Blackville	468793	3685037
23	1781331324	Barnwell	Williston	455939	3696384
24	1780551512	Barnwell	Long Branch	462494	3687122
25	1780783014	Berkeley	Cross	571390	3680884
26	1782183108	Berkeley	Cross	576957	3683634
27	1780662723	Berkeley	Bethera	614598	3677909
28	1780783318	Berkeley	Cross	571317	3680604
29	1782181521	Berkeley	Cross	573085	3680311
30	1780182626	Berkeley	Honey Hill	633677	3671579
31	1780182824	Berkeley	Honey Hill	634201	3671884
32	1781901821	Charleston	Santee	648555	3668134
33	1781581730	Charleston	Ocean Bay	622561	3657537
34	1782302214	Charleston	Awendaw	629732	3661012
35	1782301519	Charleston	Ocean Bay	628939	3659695
36	1790113112	Clarendon	St. Paul	554262	3722012
37	1790232808	Clarendon	Brogdon	560006	3735421
38	1790113419	Clarendon	St. Paul	554823	3706951
39	1790872023	Clarendon	Butlers Bay	583537	3719562
40	1790153112	Clarendon	Pinewood	554104	3708695
41	1790872012	Clarendon	Foreston	584055	3722085
42	1790872510	Clarendon	Foreston	585293	3722470
43	1790173621	Clarendon	Pinewood	555634	3725982
44	1731712515	Colleton	Black Creek	515207	3630091
45	1731311816	Colleton	St. George S.W.	526732	3663561

Table 1: (continued)
Location Information for Candidate Carolina Bays

<i>Bay#</i>	<i>BayID</i>	<i>County</i>	<i>Quadrangle</i>	<i>UTM-Easting</i>	<i>UTM-Northing</i>
46	1790801207	Dillon	Fair Bluff	673695	3797628
47	1790743430	Dillon	Fair Bluff	673524	3797268
48	1790743431	Dillon	Fair Bluff	673610	3796671
49	1790743533	Dillon	Fair Bluff	673732	3796244
50	1790571710	Dillon	Dillon East	655421	3805354
51	1780701825	Dorchester	Maple Cane Swamp	553549	3664787
52	1780701725	Dorchester	Maple Cane Swamp	553323	3664695
53	1781022626	Dorchester	St. George	536110	3677049
54	1781021820	Dorchester	Reevesville	534055	3678378
55	1791020817	Georgetown	Kilsock Bay	642012	3687610
56	1780571420	Georgetown	Jamestown	624646	3690085
57	1790361623	Georgetown	Carvers Bay	657079	3719579
58	1781002928	Hampton	Fairfax	477421	3637878
59	1780943216	Hampton	Furman	477579	3619488
60	1781002729	Hampton	Fairfax	476915	3637591
61	1800762911	Horry	Dongola	668098	3746744
62	1800901313	Horry	Brittons Neck	658366	3757555
63	1800582816	Horry	Fair Bluff	674832	3791921
64	1800762713	Horry	Dongola	662427	3746110
65	1800762711	Horry	Dongola	668220	3746280
66	(complex-20)	Horry	Loris	687000	3767000
67	(complex-36)	Horry	Hand	702000	3741000
68	1811462421	Kershaw	Bethune	560500	3805427
69	1810882829	Kershaw	Camden North	542122	3797366
70	1811260932	Kershaw	Camden North	544280	3798201
71	1811462219	Kershaw	Bethune	560232	3806120
72	1811260832	Kershaw	Camden North	544012	3798171
73	1810301320	Lee	Elliott	578585	3769744
74	1810302015	Lee	Elliott	580396	3770805
75	1780422025	Lexington	Pelion East	482732	3739591
76	1780102425	Marion	Outland	661543	3733354
77	1780102323	Marion	Outland	661128	3733872
78	1780122434	Marion	Snow Island	661244	3738317
79	1780122334	Marion	Snow Island	661012	3738244
80	1780103424	Marion	Yauhannah	664000	3733652
81	1780102311	Marion	Snow Island	661116	3737079
82	1780202407	Marion	Centenary	659129	3772667
83	1780202013	Marion	Centenary	660651	3773479
84	1780202309	Marion	Centenary	659756	3772760
85	1780201716	Marion	Centenary	660698	3773864
86	1780102014	Marion	Snow Island	660232	3736250
87	1780201519	Marion	Centenary	660729	3775097
88	1780222634	Marion	Centenary	661054	3775534
89	1780102523	Marion	Outland	661671	3733799
90	1780102822	Marion	Outland	662354	3734384

Table 1: (continued)
Location Information for Candidate Carolina Bays

<i>Bay#</i>	<i>BayID</i>	<i>County</i>	<i>Quadrangle</i>	<i>UTM-Easting</i>	<i>UTM-Northing</i>
91	1780102519	Marion	Outland	661720	3734915
92	1780102018	Marion	Outland	660341	3735348
93	1780102815	Marion	Yauhannah	662256	3735402
94	1780102212	Marion	Snow Island	660866	3736616
95	1780102908	Marion	Dongola	662427	3737805
96	1780102814	Marion	Dongola	662268	3735799
97	1780102209	Marion	Snow Island	660817	3737220
98	1780102510	Marion	Snow Island	661421	3737220
99	1780102914	Marion	Dongola	662506	3735933
100	1780102117	Marion	Outland	660500	3735134
101	1780102324	Marion	Outland	661360	3733610
102	2780541309	Richland	Gadsden	519961	3745896
103	2780662123	Richland	Congaree	515470	3753854
104	2780662025	Richland	Congaree	515323	3753500
105	2780541114	Richland	Gadsden	520341	3747207
106	1770243415	Saluda	Batesburg	445543	3749665
107	1790471721	Sumter	Privateer	548305	3735280
108	1790652014	Sumter	Dalzell	555274	3765738
109	1780772623	Williamsburg	Lake City East	620665	3737610
110	1781271708	Williamsburg	Salters	605183	3716329
111	1780872508	Williamsburg	Trio	620274	3697030

percent disturbance, vegetative complex and protection project status. A complete listing and definition of the attributes is included at the front of the appendix.

In order to facilitate use of the Carolina Bays data base by local regulatory authorities, the data were converted from Arc/Info coverages to shapefiles. This allows their use with the more common Arcview desktop mapping system that has been employed by local governments throughout the State. The shapefiles contain the center point bay locations and associated tabular data as illustrated in Table 1. The tabular data consists of an internal identification number, a bay identification number, county of occurrence, quadrangle name, and UTM northing and easting coordinates. The bay identification number can be used to manually relate the detailed ecological characterization information in the Appendix 1 to the bay location. At this time, the complete ecological data base has not been imported into a relational data base management system for linkage to the GIS.

Draft NWI maps also were digitized as part of the effort to develop a database supporting candidate bays assessment. These data were used by the Heritage Trust Program biologist and the state soil scientist in their assessment of candidate bays. These data have been replaced with final NWI data updated to 1989 and 1994 photography which are available through the SC DNR GIS Data Clearinghouse.

IMAGE GRAPHICS AND AWARENESS OUTREACH

Once the 165 candidate bays were identified for protection status, an educational effort was initiated to teach the public about the uniqueness and value of Carolina Bays. As part of this outreach program, 10,000 posters were produced resulting in a high-quality graphic product with explanatory text that was distributed to a broad cross-section of the general public. The posters were entitled "Carolina Bays - South Carolina's Mysterious Wetlands" and served as a popular and effective mechanism for transmitting an appreciation and awareness of Carolina Bay wetlands.

A second edition of the poster included a thorough revision of the text and update of basic information. Another 6,300 posters were printed and disseminated through various avenues of distribution. These included the groups listed below:

- (1) SC DNR's Map and Information Center,
- (2) South Carolina Maps and Aerial Photographic Systems (SCMAPS) educational program jointly administered by the DNR, Clemson University and S.C. Department of Education which targets middle school students,
- (3) SC DNR educational programs and workshops,
- (4) Coastal Ecosystem Focus Area regional task forces; and
- (5) Soil and Water Conservation Districts (a subdivision of state government at the county level).

In addition to the poster dissemination, personnel from each of the 27 Conservation Districts where candidate bays exist were trained in bay values and awareness outreach. Educational posters, graphics and other information was provided to the Districts for distribution to farmers, schools and the general public. The primary graphic contained a color infrared aerial photograph and a satellite image of a representative bay from each county simultaneously displayed to illustrate the variation between multiple data sources in depicting bays (Figures 4 and 5). Specific outreach efforts were organized to educate farmers about the existence and value of Carolina Bays because of the historic role of agriculture in their alteration and destruction.

District offices located in the counties listed below were the primary focus of these educational efforts.

Aiken	Darlington	Kershaw
Allendale	Dillon	Lee
Bamberg	Dorchester	Marion
Barnwell	Edgefield	Marlboro
Berkeley	Florence	Orangeburg
Calhoun	Georgetown	Richland
Charleston	Hampton	Saluda
Clarendon	Horry	Sumter
Colleton	Jasper	Williamsburg



Figure 4: Aerial Photograph of the Lewis Ocean Bay Complex, Myrtle Beach, SC

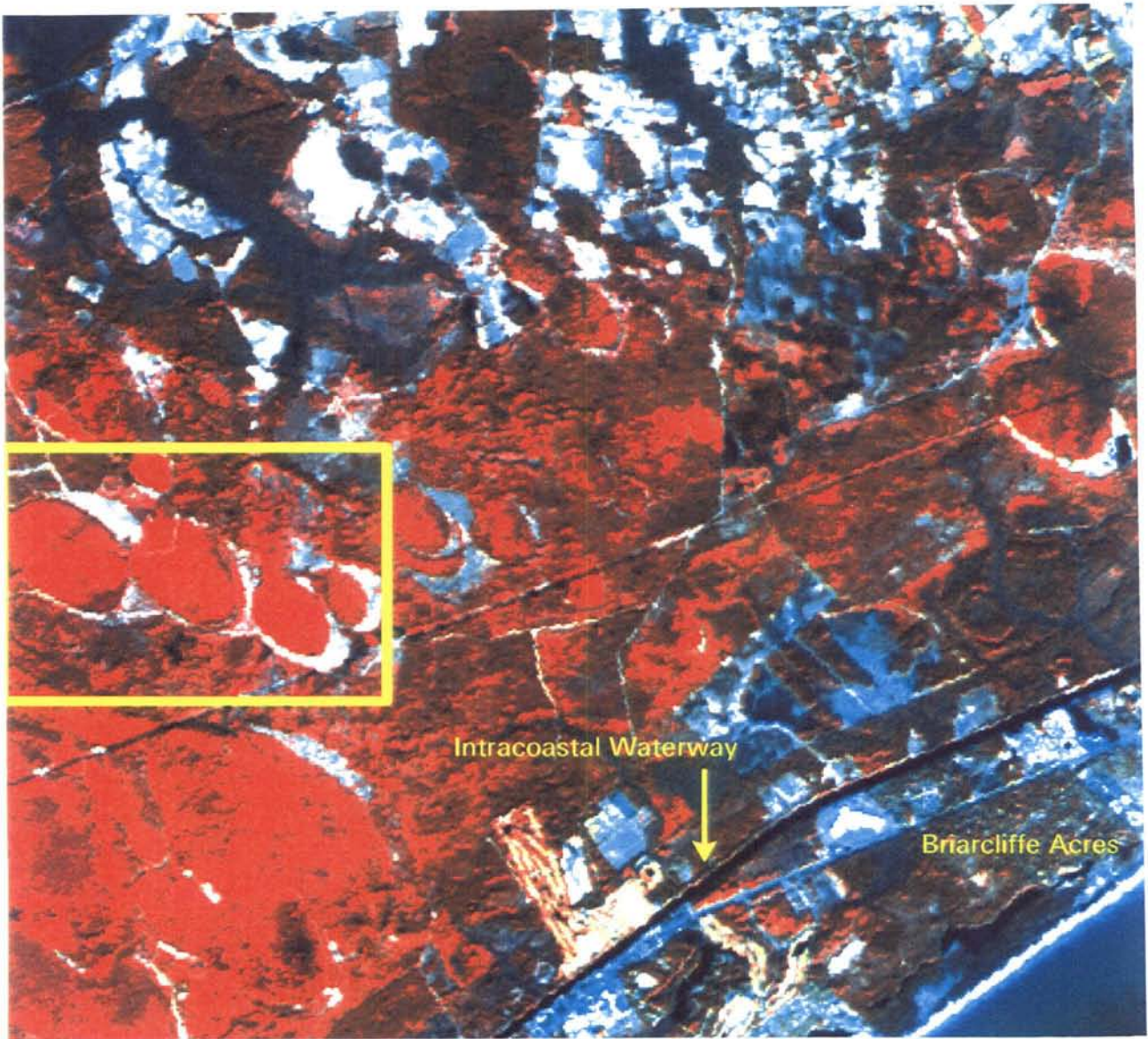


Figure 5: Satellite Image of Lewis Ocean Bay Complex, Myrtle Beach, SC

SUMMARY

Historically, the South Carolina coastal plain contained numerous unique Carolina Bay wetlands. Over the past three centuries, what was estimated to have been more than 4000 bays, has been reduced to 165 that are relatively intact and warranted for protection. Agriculture, forestry, and various other land use practices have destroyed or altered most of the original bay systems.

This advance identification (ADID) process established procedures and criteria to identify, characterize, and prioritize the best of the remaining bays as candidates for protection. Using the inventory data from previous studies, assessment characteristics were defined which included hydric soils, hydrophytic vegetation, hydrologic regime, and level of disturbance. The assessment evaluated the combination of characteristics for each bay that least detracted from its natural pristine condition. One hundred and nine (109) individual bays and two bay complexes (composed of 56 individual bays) have been recommended by this process for protection.

The location of the 109 candidate bays and 2 bay complexes were digitized into a geographic information system (GIS) and can be used with other data at the local level as part of their resource planning and management strategies. In addition, electronic files containing the ecological characteristics for each candidate bay were created that provide information on their vegetative composition, physical dimension, location and condition.

Through training sessions and public awareness opportunities, numerous civic organizations, government agencies, and private citizens were educated on the presence and importance of Carolina Bay wetlands protection to South Carolina. Various posters and aerial photographs were used to convey the complexity of Carolina Bay systems and their unique role in maintaining the state's biodiversity.

REFERENCES

- Bennett, S.H. and J.B. Nelson. 1991. ***Distribution and Status of Carolina Bays in South Carolina***. S.C. Wildlife and Marine Resources Dept., Nongame and Heritage Trust Pub.No. 1. 88p.
- Cowardin, L.M., V. Carter, F.C. Golet, and E.T. LaRoe. 1979. ***Classification of Wetlands and Deepwater Habitats of the United States***. U.S. Fish and Wildlife Service, Office of Biological Services. FWS/OBS 79/31. 131 p.
- Dahl, T.E. and C.E. Johnson. 1991. ***Status and Trends of Wetlands in the Conterminous United States, Mid-1970s to Mid-1980s***. USDOI, Fish and Wildlife Service. Washington, D.C. 28p.
- Fraye, W.E., T.J. Monahan, D.C. Bowden and F.A. Graybill. 1983. ***Status and Trends of Wetlands and Deepwater Habitats in the Conterminous United States, 1950s to 1970s***. Dept. Of Forest and Wood Sciences, Colorado State University, Ft. Collins. 32p.
- Hefner, J.M., B.O. Wilen, T.E. Dahl and W.E. Frayer. 1994. ***Southeast Wetlands: Status and Trends, Mid-1970s to Mid-1980s***. USDOI, Fish and Wildlife Service. Atlanta. 33p.
- Mitsch, W.J. and J.G. Gosselink. 1986. ***Wetlands***. Van Nostrand Reinhold Co. N.Y. 539p.
- Prouty, W.F. 1952. ***Carolina Bays and Their Origin***. Bull. Geol. Soc. Am. 63:167-224.
- Schalles, J.F., R.R. Sharitz, J.W. Gibbons, G.J. Leversee and J.N. Knox. 1989. ***Carolina Bays of the Savannah River Plant***. Savannah River Plant National Environmental Research Park Program. 70 p.
- Tiner, R.W. 1984. ***Wetlands of the United States: Current Status and Recent Trends***. USDOI, Fish and Wildlife Service, National Wetlands Inventory. Washington, D.C. 59p.
- U.S. Environmental Protection Agency. 1988. ***America's Wetlands: Our Vital Link Between Land and Water***. Office of Wetlands Protection. Washington, D.C. 10p.
- U.S. Environmental Protection Agency. 1991. ***Fact Sheet: Advance Identification of Wetlands Program***. Region IV, Office of Wetland Protection. Atlanta, GA. 6p.

APPENDIX 1:

**ECOLOGICAL CHARACTERIZATION ATTRIBUTES FOR
CANDIDATE CAROLINA BAYS IN SOUTH CAROLINA**

ECOLOGICAL CHARACTERIZATION ATTRIBUTES FOR CANDIDATE CAROLINA BAYS

<u>Attribute</u>	<u>Definition</u>	<u>Value format</u>
COUNTY	County where bay is located	Character
BAYID	Identification number	Integer value
COMPLEX	Presence of bay within a complex	Yes/No
LALENGTH	Long axis length of bay	Integer (feet)
PCNTDIST	Percent bay disturbance	Integer (%)
DISTTYPE	Disturbance type	CO = Commercial development DI = Ditch FP = Farm Ponds LO = Logging PP = Pine plantation RC = Row crop RD = Road RE = Residential development RM = Road in Margin ROW = Right of way RTB = Road through bay
SANDRIM	Sand rim location	Compass direction or absent
SURRLAND	Type of surrounding land use	CO = Commercial development LO = Logging PP = Pine plantation RC = Row crop RD = Road RE = Residential development
BAYTYPE	Type of bay natural community	Character
DISTCOMM	Disturbance comments/notes	Character
CANOPY	Over-story vegetation type(s)	Species scientific name(s)
SHRUB	Mid-story vegetation type(s)	Species scientific name(s)
GRNDCOV	Under-story vegetation type(s)	Species scientific name(s)
SIGNATEL	Significant natural elements (Represents rare, threatened or endangered species or communities/species of special concern)	Species scientific name(s) or community name
OWNER	Property owner (if available)	Character
PROTPROJ	Heritage Trust Program protection project	Yes/No
FLDSURDAT	Field survey date	Date (Year 2000 compliant)
UTMCOOR	Universal Transverse Mercator coordinates	Northing & Easting (in meters)
TOPOQUAD	US Geological Survey (USGS) 7.5 minute topographic quadrangle map name	Character

AIKEN COUNTY

COUNTY: Aiken **BAYID:** 1782142923 **COMPLEX:** No **LALength:** 833 **PCNTDIST:** 3 **DISTTYPE:** DI
SANDRIM: Absent **SURRLAND:** RC, LO **BAYTYPE:** Depression meadow **DISTCOMM:** Burned, stumps,
snags, invasion on edges by pines, fallen trees **CANOPY:** *Nyssa biflora* **SHRUB:** No info **GRNDCOV:**
Diodia virginiana, *Ludwigia* spp., *Panicum* spp. **SIGNATEL:** *Coreopsis rosea* (abundant) **OWNER:** No info
PROTPROJ: No **FLDSURDAT:** 09/03/1987 **UTMCOOR:** N3742043 E441220 **TOPOQUAD:** Ridge Spring

ALLENDALE COUNTY

COUNTY: Allendale **BAYID:** 1780661122 **COMPLEX:** No **LALength:** 3125 **PCNTDIST:** 3 **DISTTYPE:**
RC, PP **SANDRIM:** SE, SW **SURRLAND:** RC, PP, LO **BAYTYPE:** Depression meadow **DISTCOMM:**
Burned, logged, ditched **CANOPY:** *Quercus nigra*, *Carya* spp., *Liquidambar styraciflua*, *Melia azadirachta*,
Quercus spp., *Acer rubrum*, *Nyssa biflora*, *Diospyros virginiana*, *Taxodium ascendens* **SHRUB:** *Vitis*
rotundifolia, *Callicarpa americana*, *Myrica cerifera*, *Aralia spinosa*, *Cephalanthus occidentalis*, *Decodon*
verticillata **GRNDCOV:** *Smilax* spp., *Asplenium* spp., *Osmunda* spp., *Panicum hemitomon*, *Sagittaria* spp.,
Rhynchospora spp., *Nymphaea odorata*, *Pontederia lancifolium* **SIGNATEL:** No info **OWNER:** No info
PROTPROJ: No **FLDSURDAT:** 07/15/1987 **UTMCOOR:** N3642866 E461988 **TOPOQUAD:** Bull Pond

COUNTY: Allendale **BAYID:** 1783282220 **COMPLEX:** No **LALength:** 1875 **PCNTDIST:** 2 **DISTTYPE:**
DI, RM **SANDRIM:** Absent **SURRLAND:** RC, PP, LO **BAYTYPE:** Pond cypress savannah, water 2 feet
deep **DISTCOMM:** Timbered, fence line, some cypress marked **CANOPY:** *Taxodium ascendens*, *Nyssa*
biflora **SHRUB:** *Lyonia* spp., *Myrica cerifera*, *Hypericum* spp., *Ilex myrtifolia*, *Clethra alnifolia* **GRNDCOV:**
Spiranthes spp., *Polygala* spp., *Rhynchospora* spp., *Aristida* spp., *Iris* spp., *Utricularia* spp., *Agalinis aphylla*,
Helenium spp., *Panicum hemitomon* **SIGNATEL:** *Lobelia boykinii* **OWNER:** No info **PROTPROJ:** No
FLDSURDAT: 07/09/1987 **UTMCOOR:** N3630470 E471232 **TOPOQUAD:** Solomons Crossroads

COUNTY: Allendale **BAYID:** 1783262306 **COMPLEX:** No **LALength:** 4791 **PCNTDIST:** 7 **DISTTYPE:**
DI, RC **SANDRIM:** Absent **SURRLAND:** RC, PP, LO **BAYTYPE:** Pond Cypress Savannah **DISTCOMM:**
No info **CANOPY:** *Taxodium ascendens*, *Pinus taeda*, *Nyssa biflora* **SHRUB:** *Clethra alnifolia*, *Myrica*
cerifera, *Ilex myrtifolia*, *Magnolia virginiana* **GRNDCOV:** *Iris* spp., *Rhexia* spp., *Scleria* spp., *Pluchea foetida*,
Hypericum drummondii, *Osmunda* spp., *Polygala cymosa*, *Aristida* spp., *Mitreola* spp. **SIGNATEL:** *Stillingia*
aquatica, *Oxypolis canbyi*, *Scleria baldwinii* **OWNER:** No info **PROTPROJ:** No **FLDSURDAT:** 07/09/1987
UTMCOOR: N3641305 E471415 **TOPOQUAD:** Barton

COUNTY: Allendale **BAYID:** 1780662031 **COMPLEX:** No **LALength:** 4375 **PCNTDIST:** 15 **DISTTYPE:**
DI, RC, PP, RM **SANDRIM:** SE, SW **SURRLAND:** RC, PP, LO **BAYTYPE:** Pond Cypress Pond, Non-
alluvial Swamp **DISTCOMM:** South end devastated **CANOPY:** No info **SHRUB:** No info **GRNDCOV:**
Cyperus spp., *Rhynchospora* spp. **SIGNATEL:** None **OWNER:** No info **PROTPROJ:** No **FLDSURDAT:**
07/15/1987 **UTMCOOR:** N3640524 E464506 **TOPOQUAD:** Bull Pond

COUNTY: Allendale **BAYID:** 1780161521 **COMPLEX:** No **LALength:** 2291 **PCNTDIST:** 6 **DISTTYPE:**
DI, ROW **SANDRIM:** Absent **SURRLAND:** RC, PP, LO **BAYTYPE:** Pond cypress **DISTCOMM:** Power
lines, limited tree cutting **CANOPY:** *Taxodium ascendens*, *Nyssa biflora* **SHRUB:** *Myrica cerifera*, *Ilex*
myrtifolia, *Cephalanthus* spp. **GRNDCOV:** *Scleria* spp., *Mitreola* spp., *Centella asiatica*, *Pluchea foetida*,
Polygala cymosa, *Boltonia asteroides*, *Panicum hemitomon*, *Juncus repens*, *Nymphaea odorata*
SIGNATEL: No info **OWNER:** No info **PROTPROJ:** No **FLDSURDAT:** 07/29/1987 **UTMCOOR:** N3652610
E475305 **TOPOQUAD:** Allendale

COUNTY: Allendale **BAYID:** 1783223414 **COMPLEX:** No **LALENGTH:** 2291 **PCNTDIST:** 7 **DISTTYPE:** RC, LO, RM **SANDRIM:** Absent **SURRLAND:** RC, LO **BAYTYPE:** Open water lake, Depression meadow **DISTCOMM:** No info **CANOPY:** None **SHRUB:** None **GRNDCOV:** Ludwigia v., Rubus spp., Solidago spp., Rheria m., Boltonia a., Leersia spp., Hydrocotylo spp., Eulthamia spp., Pluchea f., Polygonum spp., Bacopa c., Rhynchospora spp., Rhynchospora t., Rheria v., Eleochois spp., Xyris spp., Panicum h., Utricularia spp. **SIGNATEL:** No info **OWNER:** No info **PROTPROJ:** No **FLDSURDAT:** 07/29/1987 **UTMCOOR:** N3653317 E474244 **TOPOQUAD:** Allendale

COUNTY: Allendale **BAYID:** 1780161610 **COMPLEX:** No **LALENGTH:** 1458 **PCNTDIST:** 2 **DISTTYPE:** RC **SANDRIM:** Absent **SURRLAND:** RC, PP, LO, RE **BAYTYPE:** No info **DISTCOMM:** Fire suppression, very gradual transition from rim to center **CANOPY:** Quercus nigra, Carya spp., Acer rubrum, Liquidamber styraciflua **SHRUB:** Vitis rotundifolia, Aralia spp., Clethra alnifolia, Myrica cerifera, Smilax spp., Magnolia virginia, Itea virginica, Lyonia lucida, Ilex myrtifolia, Diospyros virginiana **GRNDCOV:** Osmunda cinnamomea, Cuscuta spp., Woodwardia spp., Osmunda regalis, Sphagnum spp., Lycopus spp., Rhynchospora spp., Utricularia purpurea **SIGNATEL:** No info **OWNER:** No info **PROTPROJ:** No **FLDSURDAT:** 06/29/1987 **UTMCOORD:** N3655671 E475646 **TOPOQUAD:** Allendale

BAMBERG COUNTY

COUNTY: Bamberg **BAYID:** 2780112418 **COMPLEX:** No **LALENGTH:** No info **PCNTDIST:** No info **DISTTYPE:** No info **SANDRIM:** No info **SURRLAND:** No info **BAYTYPE:** Pond cypress pond **DISTCOMM:** Very little disturbance, cultivated fields on S. & E. sides, dirt road on east edge, some trash in area **CANOPY:** Taxodium ascendens, Nyssa biflora, Carya spp., Quercus phellos, Quercus nigra **SHRUB:** Acer rubrum, Itea virginica, Clethra alnifolia, Rhododendron spp. **GRNDCOV:** Pontederia lancifolium, Nyphaea odorata, Rhus radicans **SIGNATEL:** Wading bird rookery, cattle egret, green back heron & yellow crowned night heron **OWNER:** No info **PROTPROJ:** No **FLDSURDAT:** 05/30/1984 **UTMCOOR:** N3683963 E499720 **TOPOQUAD:** Bamberg

COUNTY: Bamberg **BAYID:** 2780112832 **COMPLEX:** No **LALENGTH:** 2916 **PCNTDIST:** 10 **DISTTYPE:** RC **SANDRIM:** Absent **SURRLAND:** RC **BAYTYPE:** Pond cypress pond **DISTCOMM:** No info **CANOPY:** Taxodium ascendens, Nyssa spp., Liquidamber spp. **SHRUB:** Itea spp., Myrioca spp., Lyonia spp., Vaccinium spp., Cephalanthus spp., Ilex spp. **GRNDCOV:** Vitis spp., Tradescantia rosea **SIGNATEL:** None **OWNER:** No info **PROTPROJ:** No **FLDSURDAT:** No info **UTMCOOR:** N3679482 E504146 **TOPOQUAD:** Midway

COUNTY: Bamberg **BAYID:** 2781033531 **COMPLEX:** No **LALENGTH:** 1875 **PCNTDIST:** 5 **DISTTYPE:** CO **SANDRIM:** Absent **SURRLAND:** RC, LO **BAYTYPE:** Pond cypress pond, water filled **DISTCOMM:** Some cutting on east end, access on west end **CANOPY:** Nyssa bioflora, Taxodium ascendens, Carya spp. **SHRUB:** Cephalanthus spp., Ilex cassive **GRNDCOV:** Nymphaea odorata, Panicum hemitomom **SIGNATEL:** Rhexia aristosa, cottonmouth **OWNER:** SCDNR **PROTPROJ:** Yes **FLDSURDAT:** 06/06/1984 **UTMCOOR:** N3668970 E484524 **TOPOQUAD:** Olar

COUNTY: Bamberg **BAYID:** 2780523224 **COMPLEX:** No **LALENGTH:** No info **PCNTDIST:** No info **DISTTYPE:** No info **SANDRIM:** No info **SURRLAND:** No info **BAYTYPE:** Pond cypress pond **DISTCOMM:** Ditches around edge **CANOPY:** Pond cypress, Nyssa biflora, Liquidamber styraciflua, Diospyros spp. **SHRUB:** Cephalanthus spp., Diospyros spp. **GRNDCOV:** Pluchea fortida, Carex spp., Osmunda l., Rhynchospora c. **SIGNATEL:** Rhexia aristosa **OWNER:** No info **PROTPROJ:** No **FLDSURDAT:** 07/13/1984 **UTMCOOR:** N3679841 E495823 **TOPOQUAD:** Bamberg

COUNTY: Bamberg **BAYID:** 2781053115 **COMPLEX:** No **LALength:** 2916 **PCNTDIST:** 5 **DISTTYPE:** RC, ROW **SANDRIM:** Absent **SURRLAND:** RC **BAYTYPE:** Pond cypress pond **DISTCOMM:** Two power lines across north end, fence at north end **CANOPY:** Taxodium ascendens **SHRUB:** Magnolia virginia, Nyssa spp. **GRNDCOV:** Carex spp., Rhynchospora spp., Nymphaea spp. **SIGNATEL:** No info **OWNER:** No info **PROT PROJ:** No **FLDSURDAT:** 06/06/1984 **UTMCOOR:** N3665738 E481152 **TOPOQUAD:** Olar

COUNTY: Bamberg **BAYID:** 2782771821 **COMPLEX:** No **LALength:** 2500 **PCNTDIST:** 20 **DISTTYPE:** RC, RM **SANDRIM:** Absent **SURRLAND:** RC, LO **BAYTYPE:** Pond cypress pond **DISTCOMM:** Old ditches frequent at edge, fallen logs, stumps **CANOPY:** Taxodium ascendens, Nyssa biflora **SHRUB:** Ilex myrtifolia, Cephalanthus spp., Lyonia lucida **GRNDCOV:** Juncus repens, Polygala spp., Osmunda spp. **SIGNATEL:** Wading bird rookery, yellow crowned night heron, Lobelia boykinii **OWNER:** No info **PROT PROJ:** No **FLDSURDAT:** No info **UTMCOOR:** N3673500 E512256 **TOPOQUAD:** Branchville South

COUNTY: Bamberg **BAYID:** 2780702223 **COMPLEX:** No **LALength:** 1250 **PCNTDIST:** 0 **DISTTYPE:** None **SANDRIM:** Absent **SURRLAND:** RC, LO **BAYTYPE:** Depression meadow **DISTCOMM:** South edge has some ditches, logging road on south side, knocked down trees and brush on west side **CANOPY:** None **SHRUB:** Salix spp. **GRNDCOV:** Leersia spp., Panicum spp., Rhynchospora spp., Rhexia spp., Polygonum spp. **SIGNATEL:** No info **OWNER:** No info **PROT PROJ:** No **FLDSURDAT:** 06/20/1984 **UTMCOOR:** N3675872 E486567 **TOPOQUAD:** Olar

COUNTY: Bamberg **BAYID:** 2780112434 **COMPLEX:** No **LALength:** 1250 **PCNTDIST:** 10 **DISTTYPE:** RC **SANDRIM:** Absent **SURRLAND:** RC, LO **BAYTYPE:** Nonalluvial swamp; water filled **DISTCOMM:** Knocked down trees and fallen brush, most disturbance on the north west edge, otherwise very good shape **CANOPY:** Taxodium ascendens, Nyssa spp., Acer rubrum **SHRUB:** Clethra spp., Stillingia itea **GRNDCOV:** Rhynchospora spp. **SIGNATEL:** No info **OWNER:** No info **PROT PROJ:** No **FLDSURDAT:** 05/31/1984 **UTMCOOR:** N3679098 E500591 **TOPOQUAD:** Midway

COUNTY: Bamberg **BAYID:** 2780113227 **COMPLEX:** No **LALength:** 2500 **PCNTDIST:** 20 **DISTTYPE:** RC, RM **SANDRIM:** Absent **SURRLAND:** RC, RE **BAYTYPE:** Pond cypress pond, water filled **DISTCOMM:** No info **CANOPY:** Taxodium ascendens, Nyssa spp., Liquidambar styraciflua, Diospyros spp. **SHRUB:** Ilex cass **GRNDCOV:** Nymphaea spp., Carex l., Pari spp. **SIGNATEL:** No info **OWNER:** No info **PROT PROJ:** No **FLDSURDAT:** 05/31/1984 **UTMCOOR:** N3681585 E501957 **TOPOQUAD:** Midway

COUNTY: Bamberg **BAYID:** 2780112620 **COMPLEX:** No **LALength:** 2916 **PCNTDIST:** 20 **DISTTYPE:** RC, RM **SANDRIM:** Absent **SURRLAND:** RC, LO, RE **BAYTYPE:** Nonalluvial swamp, forested and water filled **DISTCOMM:** Some lumbering on west edge, extensively chopped up fields on west side, cultivated fields in vicinity **CANOPY:** Nyssa biflora, Taxodium ascendens, Acer rubrum **SHRUB:** Myrica cerifera, Smilax spp., Lyonia lucida, Acer rubrum, Vaccinium spp., Persea borbonia, Magnolia virginia, Clethra alifolia, Itea virginica, Cephalanthus occidentalis, Sassafras spp., Ilex c. **GRNDCOV:** Osmunda cinnamomea, Osmunda regalis, Vitis rotundifolia, Woodwardia spp., Sphagnum spp. **SIGNATEL:** Pileated woodpeckers **OWNER:** No info **PROT PROJ:** No **FLDSURDAT:** 05/30/1984 **UTMCOOR:** N3683445 E500451 **TOPOQUAD:** Midway

COUNTY: Bamberg **BAYID:** 2780501822 **COMPLEX:** No **LALength:** 1875 **PCNTDIST:** 20 **DISTTYPE:** RC **SANDRIM:** Absent **SURRLAND:** RC **BAYTYPE:** Pond cypress pond **DISTCOMM:** Very little disturbance **CANOPY:** Taxodium ascendens, Pinus taeda **SHRUB:** Nyssa c., Salix spp. **GRNDCOV:** Pluchea spp., Panicum hemitomon, Eriocaulon spp., Rhexia spp. **SIGNATEL:** No info **OWNER:** No info **PROT PROJ:** No **FLDSURDAT:** 05/30/1984 **UTMCOOR:** N3687098 E492793 **TOPOQUAD:** Bamberg

BARNWELL COUNTY

COUNTY: Barnwell **BAYID:** 1780251822 **COMPLEX:** No **LALength:** 2708 **PCNTDIST:** 10 **DISTTYPE:** RC, DI, RM **SANDRIM:** Absent **SURRLAND:** RC, LO **BAYTYPE:** Pond cypress pond **DISTCOMM:** 75% of cypress harvested, only saplings and gnarled cull trees left, DBH 8-10", recent fire evident (within the last four years), fire breaks are evident throughout bay **CANOPY:** Taxodium ascendens, Nyssa biflora **SHRUB:** Hypericum fasciculatum, Ilex myrtifolia, Magnolia virginiana, Clethra alnifolia, Polygala cymosa **GRNDCOV:** Woodwardia virginica, Clethra alnifolia, Lachnathes caroliniana, Nymphaea odorata, Proserpinaca pectinata, Andropogon spp., Utricularia purpurea, Agalinis linifolia **SIGNATEL:** Dorsera intermedia, Rhynchospora tracyi, Hypericum fasciculatum **OWNER:** No info **PROTPROJ:** No **FLDSURDAT:** No info **UTMCOOR:** N3686030 E475854 **TOPOQUAD:** Blackville

COUNTY: Barnwell **BAYID:** 1781011517 **COMPLEX:** No **LALength:** 1458 **PCNTDIST:** 5 **DISTTYPE:** DI, RC **SANDRIM:** Absent **SURRLAND:** RC, LO **BAYTYPE:** Pond cypress savannah **DISTCOMM:** Minimal shallow fire breaks throughout, water is 1 ft. deep in the center of the bay **CANOPY:** Taxodium ascendens **SHRUB:** Cephalanthus occidentalis **GRNDCOV:** Lobelia boykinii, Proserpinaca pectinata, Polygala cymosa, Nymphaea odorata, Sagittaria graminea, Leersia spp., Panicum spp., Panicum hemitomon, Oxypolis canbyi, Rhexia aristosa **SIGNATEL:** Lobelia boykinii, Oxypolis canbyi, Rhexia aristosa **OWNER:** James R. Hill **PROTPROJ:** Yes **FLDSURDAT:** 06/14/1983 **UTMCOOR:** N3684537 E468799 **TOPOQUAD:** Blackville

COUNTY: Barnwell **BAYID:** 1781011519 **COMPLEX:** No **LALength:** 1875 **PCNTDIST:** 5 **DISTTYPE:** DI, RC **SANDRIM:** Absent **SURRLAND:** RC, LO **BAYTYPE:** Pond cypress savannah **DISTCOMM:** Fire recently, no sign of attempted drainage **CANOPY:** Taxodium ascendens, Nyssa biflora **SHRUB:** Ilex m., Vitis rotundifolia, Hypericum fasciculatum **GRNDCOV:** Carex walteriana, Woodwardia spp., Sphagnum spp., Helenium vernale, Scleria baldwinii, Lobelia boykinii, Eriocaulon spp. **SIGNATEL:** Lobelia boykinii, Scleria baldwinii **OWNER:** No info **PROTPROJ:** No **FLDSURDAT:** 06/07/1983 **UTMCOOR:** N3685037 E468793 **TOPOQUAD:** Blackville

COUNTY: Barnwell **BAYID:** 1781331324 **COMPLEX:** No **LALength:** 1875 **PCNTDIST:** 7 **DISTTYPE:** DI, RM **SANDRIM:** Absent **SURRLAND:** RC, LO **BAYTYPE:** Open water lake with grass ridge border **DISTCOMM:** 0-5% shallow ditch through center **CANOPY:** None, bordered by Hardwood-Pine forest, Magnolia, Pond pine **SHRUB:** Ilex glabra, Ilex myrtifolia, Vitis rotundifolia, Sorbus spp., Acer rubrum **GRNDCOV:** Panicum spp., Nymphaea odorata, Eleocharis robinsii, Eleocharis e., Nymphoides cordata, Pluchea foetida, Bacopa caroliniana, Eriocaulon decangulare, Brasenia spp. **SIGNATEL:** Rhynchospora tracyi, Eleocharis robinsii **OWNER:** No info **PROTPROJ:** No **FLDSURDAT:** 06/03/1983 **UTMCOOR:** N3696384 E455939 **TOPOQUAD:** Williston

COUNTY: Barnwell **BAYID:** 1780551512 **COMPLEX:** No **LALength:** 1042 **PCNTDIST:** 15 **DISTTYPE:** PP **SANDRIM:** Absent **SURRLAND:** RC, LO **BAYTYPE:** Depression meadow **DISTCOMM:** None evident, except occasional small stumps around border, many ant hills along border **CANOPY:** None, only pine along border **SHRUB:** Ilex myrtifolia, Vitis spp. **GRNDCOV:** Panicum hemitomon, Eriocaulon spp., Rhexia spp., Rhexia aristosa, Nymphaea odorata, Nymphoides x., Eleocharis spp. **SIGNATEL:** Scleria baldwinii, Rhexia aristosa, Lobelia boykinii **OWNER:** Youngblood **PROTPROJ:** No **FLDSURDAT:** 05/31/1983 **UTMCOOR:** N3687122 E462494 **TOPOQUAD:** Long Branch

BERKELEY COUNTY

COUNTY: Berkeley **BAYID:** 1780783014 **COMPLEX:** No **LALength:** 1458 **PCNTDIST:** 2 **DISTTYPE:** RC, LO **SANDRIM:** Absent **SURRLAND:** RC, LO, RE **BAYTYPE:** Pond cypress pond **DISTCOMM:** A few stumps, fields up to edge of bay on east and west sides **CANOPY:** Taxodium ascendens, Nyssa biflora **SHRUB:** Lyonia lucida, Leucothoe racemosa, Clethra alnifolia, Zenobia p., Sassafras albidum, Quercus nigra, Pteridium spp. **GRNDCOV:** No info **SIGNATEL:** No info **OWNER:** No info **PROTPROJ:** No **FLDSURDAT:** 01/05/1987 **UTMCOOR:** N3680884 E571390 **TOPOQUAD:** Cross

COUNTY: Berkeley **BAYID:** 1782183108 **COMPLEX:** No **LALength:** 4166 **PCNTDIST:** 5 **DISTTYPE:** DI, RC, PP, RE, RM **SANDRIM:** Absent **SURRLAND:** RC, PP, LO, RE **BAYTYPE:** Pond cypress pond, nonalluvial swamp **DISTCOMM:** Major power line bisects bay along long axis, residential along east margin **CANOPY:** Taxodium ascendens **SHRUB:** Itea virginica, Clethra alnifolia **GRNDCOV:** Viola spp., Iris virginica, Oxypolis canbyi, Baldwin auniflora **SIGNATEL:** None **OWNER:** No info **PROTPROJ:** No **FLDSURDAT:** 05/01/1987 **UTMCOOR:** N3683634 E576957 **TOPOQUAD:** Cross

COUNTY: Berkeley **BAYID:** 1780662723 **COMPLEX:** No **LALength:** 1875 **PCNTDIST:** 2 **DISTTYPE:** DI, RM **SANDRIM:** Absent **SURRLAND:** PP, LO **BAYTYPE:** Pocosin **DISTCOMM:** Burned last few years **CANOPY:** Pinus serotina, Gordonia lasianthus **SHRUB:** Ilex spp., Magnolia virginiana, Smilax laurifolia, Lyonia lucida **GRNDCOV:** Osmunda spp., Sphagnum spp. **SIGNATEL:** None **OWNER:** No info **PROTPROJ:** No **FLDSURDAT:** 05/20/1987 **UTMCOOR:** N3677909 E614598 **TOPOQUAD:** Betheria

COUNTY: Berkeley **BAYID:** 1780783318 **COMPLEX:** No **LALength:** 1250 **PCNTDIST:** 4 **DISTTYPE:** DI, RC, LO **SANDRIM:** Absent **SURRLAND:** RC, LO, RE **BAYTYPE:** Pond Cypress Pond **DISTCOMM:** Tree stumps, some cypress, burned, lots of submerged logs **CANOPY:** Taxodium ascendens, Acer rubrum **SHRUB:** Lyonia spp., Myrica cerifera **GRNDCOV:** Boehmeria cylindrica **SIGNATEL:** None **OWNER:** No info **PROTPROJ:** No **FLDSURDAT:** 05/01/1987 **UTMCOOR:** N3680604 E571317 **TOPOQUAD:** Cross

COUNTY: Berkeley **BAYID:** 1782181521 **COMPLEX:** No **LALength:** 10832 **PCNTDIST:** 3 **DISTTYPE:** DI, RC, RTB **SANDRIM:** Absent **SURRLAND:** RC, LO, RE **BAYTYPE:** Bay forest **DISTCOMM:** Power line **CANOPY:** Acer rubrum, Pinus serotina, Gordonia lasianthus **SHRUB:** Aralia spinosa, Myrica cerifera, Clethra alnifolia, Smilax spp. **GRNDCOV:** Osmunda cinnamomea **SIGNATEL:** None **OWNER:** No info **PROTPROJ:** No **FLDSURDAT:** 08/21/1987 **UTMCOOR:** N3680311 E573085 **TOPOQUAD:** Cross

COUNTY: Berkeley **BAY ID:** 1780182626 **COMPLEX:** No **LALength:** 2083 **PCNTDIST:** 1 **DISTTYPE:** RM **SANDRIM:** Absent **SURRLAND:** PP, LO **BAYTYPE:** Pond cypress pond **DISTCOMM:** None **CANOPY:** none (open water) **SHRUB:** none (open water) **GRNDCOV:** none (open water) **SIGNATEL:** none (open water) **OWNER:** No info **PROTPROJ:** No **FLDSURDAT:** 05/20/1987 **UTMCOOR:** N3671579 E633677 **TOPOQUAD:** Honey Hill

COUNTY: Berkeley **BAYID:** 1780182824 **COMPLEX:** No **LALength:** 2083 **PCNTDIST:** 5 **DISTTYPE:** DI, PP, RM **SANDRIM:** SE, SW **SURRLAND:** PP, LO **BAYTYPE:** Pond cypress pond **DISTCOMM:** No info **CANOPY:** Taxodium ascendens, Quercus nigra **SHRUB:** Lyonia spp., Myrica cerifera, Chionanthus virginicus **GRNDCOV:** Utricularia spp. **SIGNATEL:** No info **OWNER:** No info **PROTPROJ:** No **FLDSURDAT:** 05/29/1987 **UTMCOOR:** N3671884 E634201 **TOPOQUAD:** Honey Hill

CHARLESTON COUNTY

COUNTY: Charleston **BAYID:** 1781901821 **COMPLEX:** No **LALENGTH:** 2291 **PCNTDIST:** 2
DISTTYPE: LO, RM **SANDRIM:** SE, NE, NW **SURRLAND:** LO **BAYTYPE:** Pond Cypress Pond
DISTCOMM: Barrow pit on east side, burned **CANOPY:** Taxodium ascendens **SHRUB:** none **GRNDCOV:**
none **SIGNATEL:** Small savanah like spots, flatwoods **OWNER:** No info **PROTPROJ:** No **FLDSURDAT:**
10/01/1985 **UTMCOOR:** N3668134 E648555 **TOPOQUAD:** Santee

COUNTY: Charleston **BAYID:** 1781581730 **COMPLEX:** No **LALENGTH:** 3541 **PCNTDIST:** 1 **DISTTYPE:**
RO **SANDRIM:** Absent **SURRLAND:** LO **BAYTYPE:** Pond cypress pond, Pocasin **DISTCOMM:**
Surrounded by dry flatwoods, opens up within pond pine in very wet open area, burned, pig sign **CANOPY:**
Taxodium ascendens, Pinus serotina **SHRUB:** Rhus vernix, Myrica cerifera, Lyonia lucida, Magnolia virginia
GRNDCOV: Andropogon spp., Xyris spp., Osmunda spp., Sphagnum spp., Sarracenia flava **SIGNATEL:**
None **OWNER:** U.S. Forest Service **PROTPROJ:** Yes **FLDSURDAT:** 10/15/1985 **UTMCOOR:** N3657537
E622561 **TOPOQUAD:** Ocean Bay

COUNTY: Charleston **BAYID:** 1782302214 **COMPLEX:** No **LALENGTH:** 2780 **PCNTDIST:** 0
DISTTYPE: None **SANDRIM:** Absent **SURRLAND:** LO **BAYTYPE:** Bay Forest **DISTCOMM:** none
CANOPY: Gordonia lasianthus, Quercus l., Quercus nigra, Nyssa biflora, Acer rubrum **SHRUB:** Persea
borbonica, Lyonia spp., Vaccinium spp. **GRNDCOV:** No info **SIGNATEL:** No info **OWNER:** No info
PROTPROJ: No **FLDSURDAT:** 09/19/1985 **UTMCOOR:** N3661012 E629732 **TOPOQUAD:** Awendaw

COUNTY: Charleston **BAYID:** 1782301519 **COMPLEX:** No **LALENGTH:** 5208 **PCNTDIST:** 1
DISTTYPE: RM **SANDRIM:** SE, SW **SURRLAND:** LO **BAYTYPE:** Bay forest **DISTCOMM:** none
CANOPY: Quercus virginiana, Ilex glabra **SHRUB:** Clethra spp., Ilex galbra, Magnolia virginia, Persea spp.,
Arundinaria spp. **GRNDCOV:** None **SIGNATEL:** None **OWNER:** No info **PROTPROJ:** No **FLDSURDAT:**
09/19/1985 **UTMCOOR:** N3659695 E628939 **TOPOQUAD:** Ocean Bay

CLARENDON COUNTY

COUNTY: Clarendon **BAYID:** 1790153112 **COMPLEX:** No **LALENGTH:** 2083 **PCNTDIST:** 60
DISTTYPE: DI, RC, LO **SANDRIM:** Absent **SURRLAND:** RC, LO **BAYTYPE:** Nonalluvial swamp
DISTCOMM: Some trash **CANOPY:** Nyssa biflora, Quercus phellos, Acer rubrum, Platanus occidentalis,
Populus spp. **SHRUB:** Myrica cerifera, Cephalanthus b., Cyrilla racemosa **GRNDCOV:** Erichites spp.,
Phytolacca spp. **SIGNATEL:** None **OWNER:** No info **PROTPROJ:** No **FLDSURDAT:** 07/24/1985
UTMCOOR: N3722012 E554262 **TOPOQUAD:** Pinewood

COUNTY: Clarendon **BAYID:** 1790232808 **COMPLEX:** No **LALENGTH:** 1042 **PCNTDIST:** 7 **DISTTYPE:**
DI, RC, LO **SANDRIM:** Absent **SURRLAND:** RC, LO **BAYTYPE:** Pond cypress savannah **DISTCOMM:**
Stumps, burning, ditch **CANOPY:** Pinus p., Quercus nigra, Taxodium spp., Pinus seroina **SHRUB:** Clethra
alnifolia, Rubus spp., Ilex glabra, Pteidium spp., Rhus coppalina, Clethra alnifolia., Liquidamber styraciflua,
Ilex myrtifolia, Myrioca cerifera, Smilax laurifolia, Magnolia virginia **GRNDCOV:** Eupatorium spp.,
Pterocaulon spp., Rhexia spp., Scleria spp., Sabatia spp., Rhynchospora spp., Erianthus spp., Sclerolepis
spp., Pycnanthemum f., Osmunda r., Osmunda c., Pluchea spp., Hypericum spp., Junlus r., Rhexia a.,
Centella spp., Aristida spp. **SIGNATEL:** Rhexia aristosa, Agalinis lanifolia **OWNER:** No info **PROTPROJ:**
No **FLDSURDAT:** 08/07/1985 **UTMCOOR:** N3735421 E560006 **TOPOQUAD:** Brogdon

COUNTY: Clarendon **BAYID:** 1790113419 **COMPLEX:** No **LALength:** 2083 **PCNTDIST:** 3 **DISTTYPE:** RC, LO **SANDRIM:** Absent **SURRLAND:** RC, LO, PP, RE **BAYTYPE:** Pond cypress pond **DISTCOMM:** Fence **CANOPY:** Quercus phellos, Carya spp., Nyssa biflora, Acer rubrum, Taxodium ascendens **SHRUB:** Vitus rotundifolia, Aralia spinosa, Ilex spp., Clethra alnifolia, Smilax spp., Leucothoe spp., Ilex myrtifolia **GRNDCOV:** Woodwardia spp., Orontium aquaticum, Bidens spp., Dulichium arundinaceum, Polygonum spp., Eleocharis spp., Parthenium spp. **SIGNATEL:** Many cypress seedlings **OWNER:** No info **PROTPROJ:** No **FLDSURDAT:** No info **UTMCOOR:** N3706951 E554823 **TOPOQUAD:** Vance, St. Paul

COUNTY: Clarendon **BAYID:** 1790872023 **COMPLEX:** No **LALength:** 2083 **PCNTDIST:** 2 **DISTTYPE:** RC, RM **SANDRIM:** SE **SURRLAND:** RC, LO, PP **BAYTYPE:** Nonalluvial swamp **DISTCOMM:** Timbering **CANOPY:** Acer spp., Nyssa biflora, Pinus taeda, Magnolia virginia **SHRUB:** Clethra alnifolia, Persea borbonia, Myrica cerifera, Lyonia lucida, Itea virginica, Vaccinium spp., Cephalanthus occidentalis, Ilex myrtifolia **GRNDCOV:** Rhus vernix, Woodwardia spp., Sphagnum spp., Peltandra spp., Saururus spp., Osmunda cinnamomea, Osmunda regalis **SIGNATEL:** No info **OWNER:** No info **PROTPROJ:** Yes **FLDSURDAT:** No info **UTMCOOR:** N3719562 E583537 **TOPOQUAD:** Butlers Bay

COUNTY: Clarendon **BAYID:** 1790113112 **COMPLEX:** No **LALength:** 4791 **PCNTDIST:** 3 **DISTTYPE:** LO, RM **SANDRIM:** Absent **SURRLAND:** RC, PP, LO, RE **BAYTYPE:** Pond cypress pond **DISTCOMM:** Flooded by Lake Marion, probably logged. NOTE: Bay is probably 100% altered if flooded by Lake Marion. **CANOPY:** Short pond cypress **SHRUB:** Leucothoe racemosa, Clethra spp. **GRNDCOV:** Carex spp., Cyperus spp. **SIGNATEL:** No info **OWNER:** No info **PROTPROJ:** No **FLDSURDAT:** 08/21/1985 **UTMCOOR:** N3708695 E554104 **TOPOQUAD:** St. Paul

COUNTY: Clarendon **BAYID:** 1790872012 **COMPLEX:** No **LALength:** 7083 **PCNTDIST:** 8 **DISTTYPE:** RC, PP, RE, LO, RM, RD **SANDRIM:** Absent **SURRLAND:** RC, PP, LO **BAYTYPE:** Pond pine woodland **DISTCOMM:** Ditch on east side **CANOPY:** Pinus serotina, Pinus p., Gordonia lasianthus **SHRUB:** Ilex spp., Vaccinium spp., Magnolia virginia, Clethra alnifolia, Cyrilla racemosa **GRNDCOV:** Smilax laurifolia, Kalmia a., significant ground litter **SIGNATEL:** Pocosin **OWNER:** No info **PROTPROJ:** No **FLDSURDAT:** 08/08/1985 **UTMCOOR:** N3722085 E584055 **TOPOQUAD:** Foreston

COUNTY: Clarendon **BAYID:** 1790872510 **COMPLEX:** No **LALength:** 4375 **PCNTDIST:** 6 **DISTTYPE:** RC, PP, LO, RM **SANDRIM:** Absent **SURRLAND:** RC, PP, LO **BAYTYPE:** Forested **DISTCOMM:** Some shallow ditches, forestry on south east edge **CANOPY:** Acer rubrum, Nyssa biflora, Liquidamber styraciflua, Pinus taeda **SHRUB:** Leucothoe racemosa, Lyonia lucida, Myrica cerifera **GRNDCOV:** Osmunda spp., Sphagnum spp., Woodwardia spp., Opuntia spp. **SIGNATEL:** None **OWNER:** No info **PROTPROJ:** No **FLDSURDAT:** 08/16/1985 **UTMCOOR:** N3722470 E585293 **TOPOQUAD:** Foreston

COUNTY: Clarendon **BAYID:** 1790173621 **COMPLEX:** No **LALength:** 1458 **PCNTDIST:** 8 **DISTTYPE:** RC, RE, LO, RM **SANDRIM:** Absent **SURRLAND:** RC, LO, RE **BAYTYPE:** Nonalluvial swamp **DISTCOMM:** Stumps, garbage **CANOPY:** Pinus taeda, Acer rubrum, Liquidamber styraciflua, Populus heterophylla **SHRUB:** Cephalanthus o., Crataegus spp., Sassafras spp. **GRNDCOV:** Rhus r., Campsis spp., Thick pine straw litter **SIGNATEL:** None **OWNER:** No info **PROTPROJ:** No **FLDSURDAT:** 07/24/1985 **UTMCOOR:** N3725982 E555634 **TOPOQUAD:** Pinewood

COLLETON COUNTY

COUNTY: Colleton **BAYID:** 1731712515 **COMPLEX:** No **LALength:** 1250 **PCNTDIST:** 3 **DISTTYPE:** DI, RC **SANDRIM:** Absent **SURRLAND:** RC, LO **BAYTYPE:** Pond Cypress Pond, swamp variant **DISTCOMM:** Stumps **CANOPY:** (EDGE) Liquidamber spp., Quercus n., (INSIDE) Taxodium spp., Nyssa spp. **SHRUB:** (EDGE) Osmunda spp., Itea spp., Nyssa spp., (INSIDE) Acer., Salixace spp., Cephalanthus spp. **GRNDCOV:** (EDGE) Myrioca spp., Sphagnum spp., Saurus spp. **SIGNATEL:** Alligator, wading bird rookery (Snowy egret, little blue heron, great blue heron) **OWNER:** No info **PROTPROJ:** No **FLDSURDAT:** 06/04/1987 **UTMCOOR:** N3630091 E515207 **TOPOQUAD:** Black Creek

COUNTY: Colleton **BAYID:** 1731311816 **COMPLEX:** No **LALength:** 1875 **PCNTDIST:** 7 **DISTTYPE:** DI, RM **SANDRIM:** Absent **SURRLAND:** RC, LO **BAYTYPE:** No info **DISTCOMM:** No info **CANOPY:** Quercus n., Liquidamber spp., Nyssa spp. **SHRUB:** Sabal m., Vaccinium spp., Sebastiana spp. **GRNDCOV:** No info **SIGNATEL:** No info **OWNER:** No info **PROTPROJ:** No **FLDSURDAT:** 06/04/1987 **UTMCOOR:** N3663561 E526732 **TOPOQUAD:** St. George SW

DILLON COUNTY

COUNTY: Dillon **BAYID:** 1790801207 **COMPLEX:** No **LALength:** 3333 **PCNTDIST:** 5 **DISTTYPE:** PP, LO, RM **SANDRIM:** SW, NE **SURRLAND:** PP, LO **BAYTYPE:** Pond pine woodland, bay forest **DISTCOMM:** None **CANOPY:** Pinus taeda, Pinus serotina, Gordonia lasianthus, Diospyros virginiana, Ilex spp. **SHRUB:** Smilax lauifolia, Myrioca c., Vaccinium corymbosum **GRNDCOV:** No info **SIGNATEL:** No info **OWNER:** No info **PROTPROJ:** No **FLDSURDAT:** 08/14/1986 **UTMCOOR:** N3797628 E673695 **TOPOQUAD:** Fair Bluff

COUNTY: Dillon **BAYID:** 1790743430 **COMPLEX:** No **LALength:** 833 **PCNTDIST:** 10 **DISTTYPE:** DI, PP **SANDRIM:** Absent **SURRLAND:** PP, LO **BAYTYPE:** Nonalluvial swamp **DISTCOMM:** Shot gun shells, roads, possibly logged **CANOPY:** Liquidamber styracifula, Acer rubrum, Nyssa biflora, Populus spp., Diospyros virginiana, Fraxinus spp., Salix spp. **SHRUB:** Leucothoe racemosa, Clethra alnifolia, Myrica cerifera, Persea borbonia **GRNDCOV:** Lemna spp. **SIGNATEL:** No info **OWNER:** No info **PROTPROJ:** No **FLDSURDAT:** 08/14/1986 **UTMCOOR:** N3797268 E673524 **TOPOQUAD:** Fair Bluff

COUNTY: Dillon **BAYID:** 1790743431 **COMPLEX:** No **LALength:** 1042 **PCNTDIST:** 10 **DISTTYPE:** PP **SANDRIM:** NE **SURRLAND:** PP, LO **BAYTYPE:** Pond pine woodland, bay forest **DISTCOMM:** None **CANOPY:** Pinus taeda, Pinus serotina, Gordonia lasianthus, Diospyros virginiana, Ilex spp. **SHRUB:** Smilax lauifolia, Myrioca c., Vaccinium corymbosum **GRNDCOV:** No info **SIGNATEL:** No info **OWNER:** No info **PROTPROJ:** No **FLDSURDAT:** 08/14/1986 **UTMCOOR:** N3796671 E673610 **TOPOQUAD:** Fair Bluff

COUNTY: Dillon **BAYID:** 1790743533 **COMPLEX:** No **LALength:** 1250 **PCNTDIST:** 8 **DISTTYPE:** LO, RM **SANDRIM:** SE **SURRLAND:** PP, LO **BAYTYPE:** Pond pine woodland, bay forest **DISTCOMM:** none **CANOPY:** Pinus taeda, Pinus serotina, Gordonia lasianthus, Diospyros virginiana, Ilex spp. **SHRUB:** Smilax lauifolia, Myrioca c., Vaccinium corymbosum **GRNDCOV:** No info **SIGNATEL:** No info **OWNER:** No info **PROTPROJ:** No **FLDSURDAT:** No info **UTMCOOR:** N3796244 E673732 **TOPOQUAD:** Fair Bluff

COUNTY: Dillon **BAYID:** 1790571710 **COMPLEX:** No **LALength:** 5833 **PCNTDIST:** 7 **DISTTYPE:** DI, RC, LO, ROW **SANDRIM:** Absent **SURRLAND:** RC, LO **BAYTYPE:** Bay Forest, tall canopy **DISTCOMM:** No info **CANOPY:** Gordonia spp., Pinus s., Acer r., Magnolia v. **SHRUB:** Diospyros spp., Zenobia spp., Lyonia spp., Myrioca spp. **GRNDCOV:** Smilax spp. **SIGNATEL:** None **OWNER:** No info **PROTPROJ:** No **FLDSURDAT:** 08/14/1986 **UTMCOOR:** N3805354 E655421 **TOPOQUAD:** Dillon East

DORCHESTER COUNTY

COUNTY: Dorchester **BAYID:** 1780701825 **COMPLEX:** No **LALength:** 1458 **PCNTDIST:** 4
DISTTYPE: DI, RC, RM **SANDRIM:** Absent **SURRLAND:** RC, LO, RE **BAYTYPE:** Savannah, Flatwoods,
Pocosin aspects **DISTCOMM:** Burned, possible drained **CANOPY:** Pinus p., Pinus serotina **SHRUB:**
Clethra spp., Ilex glabra, Myrica cerifera, Persea borbonia, Smilax laurifolia, Symplocos t., Vaccinium. spp.,
Quercus pumila, Aronia arbutifolia **GRNDCOV:** Rhexia spp., Osmunda spp., Sebastiana spp., Aristida spp.,
Pteridium spp., Elephantopus spp., Chondrophora spp., Pterocaulon spp., Gaylussacia spp. **SIGNATEL:**
No info **OWNER:** No info **PROTPROJ:** No **FLDSURDAT:** 09/05/1985 **UTMCOOR:** N3664787 E553549
TOPOQUAD: Maple Cane Swamp

COUNTY: Dorchester **BAYID:** 1780701725 **COMPLEX:** No **LALength:** 1250 **PCNTDIST:** 2
DISTTYPE: DI, RC **SANDRIM:** Absent **SURRLAND:** RC, LO, RE **BAYTYPE:** Savannah, flatwoods,
Pocosin aspect **DISTCOMM:** No info **CANOPY:** Taxodium ascendens **SHRUB:** Clethra spp., Ilex glabra,
Myrica cerifera, Persea borbonia, Smilax laurifolia, Symplocos tinctoria, Vaccinium spp., Quercus pumila,
Aronia arbutifolia **GRNDCOV:** Rhexia spp., Osmunda spp., Sebastiana spp., Aristida spp., Elephantopus
spp., Chondrophora spp., Pterocaulon spp., Gaylussacia spp. **SIGNATEL:** No info **OWNER:** No info
PROTPROJ: No **FLDSURDAT:** 09/05/1985 **UTMCOOR:** N3664695 E553323 **TOPOQUAD:** Maple Cane
Swamp

COUNTY: Dorchester **BAYID:** 1781022626 **COMPLEX:** No **LALength:** 1250 **PCNTDIST:** 2 **DISTTYPE:**
DI, RC **SANDRIM:** Absent **SURRLAND:** RC, LO, RE **BAYTYPE:** Nonalluvial swamp **DISTCOMM:** Fence,
ditch **CANOPY:** Quercus nigra, Acer rubrum, Pinus taeda, Nyssa biflora, Taxodium ascendens **SHRUB:**
Magnolia virginiana, Myrica cerifera, Persea borbonia, Itea virginiana, Ilex myrtifolia, Sambucus canadensis,
Viburnum spp. **GRNDCOV:** Woodswardia spp., Osmunda spp., Sphagnum spp., Boehmeria cylindrica
SIGNATEL: No info **OWNER:** No info **PROTPROJ:** No **FLDSURDAT:** 09/05/1985 **UTMCOOR:** N3677049
E536110 **TOPOQUAD:** St. George

COUNTY: Dorchester **BAYID:** 1781021820 **COMPLEX:** No **LALength:** 1666 **PCNTDIST:** 13
DISTTYPE: DI, RE, LO, RM **SANDRIM:** Absent **SURRLAND:** RC, LO, RE **BAYTYPE:** Nonalluvial swamp
DISTCOMM: Trash **CANOPY:** Nyssa biflora, Acer rubrum **SHRUB:** No info **GRNDCOV:** No info
SIGNATEL: None **OWNER:** No info **PROTPROJ:** No **FLDSURDAT:** 09/05/1985 **UTMCOOR:** N3678378
E534055 **TOPOQUAD:** Reevesville

GEORGETOWN COUNTY

COUNTY: Georgetown **BAYID:** 1791020817 **COMPLEX:** No **LALength:** 3750 **PCNTDIST:** 8
DISTTYPE: RE, RM, FP **SANDRIM:** Absent **SURRLAND:** RC, LO, RE **BAYTYPE:** Pocosin **DISTCOMM:**
Openings cut out, rim previously scraped **CANOPY:** Pinus elliottii, Pinus serotina, Gordonia lasianthus
SHRUB: Lyonia lucida, Persea borbonia, Ilex glabra, Smilax laurifolia, Leucothoe spp., Myrica cerifera
GRNDCOV: Dulichium spp. **SIGNATEL:** Potential Flytrap habitat **OWNER:** No info **PROTPROJ:** No
FLDSURDAT: 09/25/1986 **UTMCOOR:** N3687610 E642012 **TOPOQUAD:** Kilssock Bay

COUNTY: Georgetown **BAYID:** 1780571420 **COMPLEX:** No **LALength:** 2500 **PCNTDIST:** 3
DISTTYPE: CO, RTB **SANDRIM:** Absent **SURRLAND:** RC, PP, LO, CO **BAYTYPE:** Pond cypress
savannah **DISTCOMM:** Some trees cut, stumps **CANOPY:** Taxodium ascendens, Nyssa biflora, Pinus
taeda **SHRUB:** Clethra alnifolia, Magnolia virginiana, Ilex myrtifolia **GRNDCOV:** Lycopus spp., Panicum spp.,
Hypericum spp., Osmunda spp. **SIGNATEL:** No Info **OWNER:** No info **PROTPROJ:** No **FLDSURDAT:**
09/18/1986 **UTMCOOR:** N3690085 E624646 **TOPOQUAD:** Jamestown

COUNTY: Georgetown **BAYID:** 1790361623 **COMPLEX:** No **LALength:** 9999 **PCNTDIST:** 1
DISTTYPE: RC **SANDRIM:** Absent **SURRLAND:** RC, PP, LO **BAYTYPE:** Nonalluvial swamp **DISTCOMM:**
No info **CANOPY:** Acer rubrum, Nyssa h. **SHRUB:** No info **GRNDCOV:** No info **SIGNATEL:** No info
OWNER: No info **PROTPROJ:** No **FLDSURDAT:** 10/03/1986 **UTMCOOR:** N3719579 E657079
TOPOQUAD: Carvers Bay

HAMPTON COUNTY

COUNTY: Hampton **BAYID:** 1781002928 **COMPLEX:** No **LALength:** 2500 **PCNTDIST:** 2 **DISTTYPE:**
RC **SANDRIM:** SE **SURRLAND:** RC, LO **BAYTYPE:** Pond cypress savannah **DISTCOMM:** Stumps
standing in water **CANOPY:** Quercus nigra, Liquidamber styracifula, Acer rubrum, Pitacdi taeda, Taxodium
spp. **SHRUB:** Clethra alnifolia, Myrica cerifera, Vitis rotundifolia, Persea borbonia, Lyonia lucida, Ilex
myrtifolia, Stillingia aquatica **GRNDCOV:** Sphagnum spp., Osmunda spp., Mitreola spp. **SIGNATEL:**
Oxypolis canbyi, Stillingia aquatica **OWNER:** No info **PROTPROJ:** No **FLDSURDAT:** No info **UTMCOOR:**
N3637878 E477421 **TOPOQUAD:** Fairfax

COUNTY: Hampton **BAYID:** 1780943216 **COMPLEX:** No **LALength:** 3125 **PCNTDIST:** 10 **DISTTYPE:**
RC, RE, LO, RM, FP **SANDRIM:** Absent **SURRLAND:** RC, LO **BAYTYPE:** Pond cypress pond, savannah
DISTCOMM: Homes on east side, pigs, farm on southeast side **CANOPY:** Taxodium ascendens **SHRUB:**
Ilex myrtifolia **GRNDCOV:** Osmunda spp., Iris spp., Carex spp., Pontederia lanceifoliam, Erianthus spp.,
Lobelia boykinii, Hypericum spp., Scleria baldwinii, Rhynchospora spp., Eriocarbon spp., Polygala c.,
Lachnanthes spp., Vaccinium spp., Dichromoena s. **SIGNATEL:** Scleria Baldwinii, Lobelia boykinii
OWNER: No info **PROTPROJ:** No **FLDSURDAT:** No info **UTMCOOR:** N3619488 E477579 **TOPOQUAD:**
Furman

COUNTY: Hampton **BAYID:** 1781002729 **COMPLEX:** No **LALength:** 3958 **PCNTDIST:** 3 **DISTTYPE:**
RC, RM **SANDRIM:** SE, SW **SURRLAND:** RC, LO **BAYTYPE:** Pond cypress savannah **DISTCOMM:**
Stumps in standing water **CANOPY:** Quercus nigra, Liquidamber styraciflua, Acer rubrum, Pitacdi spp.,
Taxodium spp., Pinus taeda **SHRUB:** Clethra spp., Myrica spp., Vitis spp., Persea spp., Lyonia lucida, Ilex
myrtifolia, Campsis r., Stillingia aquatica **GRNDCOV:** Sphagnum.spp., Osmunda spp., Mitreola spp.
SIGNATEL: Oxypolis canbyi, Stillingia aquatica **OWNER:** No info **PROTPROJ:** No **FLDSURDAT:** No info
UTMCOOR: N3637591 E476915 **TOPOQUAD:** Fairfax

HORRY COUNTY

COUNTY: Horry **BAYID:** 1800762911 **COMPLEX:** No **LALength:** 625 **PCNTDIST:** 0 **DISTTYPE:** None
SANDRIM: Absent **SURRLAND:** RC, LO **BAYTYPE:** Pond cypress pond **DISTCOMM:** Trees cut, trash
CANOPY: Taxodium ascendens, Pinus taeda **SHRUB:** Magnolia virginia, Lyonia spp., Persea borbonia,
Ilex myrtifolia, Cyrilla racemosa, Rhus vernix **GRNDCOV:** No info **SIGNATEL:** No info **OWNER:** No info
PROTPROJ: No **FLDSURDAT:** No info **UTMCOOR:** N3746744 E668098 **TOPOQUAD:** Dongola

COUNTY: Horry **BAYID:** 1800901313 **COMPLEX:** No **LALength:** 833 **PCNTDIST:** 1 **DISTTYPE:** RM
SANDRIM: Absent **SURRLAND:** RC, LO **BAYTYPE:** Pocosin **DISTCOMM:** No info **CANOPY:** Pinus
serotina, Acer rubrum **SHRUB:** Myrica cerifera, Lyonia spp., Kalmia angustifolia, Gordonia lasianthus
GRNDCOV: Sphagnum spp. **SIGNATEL:** No info **OWNER:** No info **PROTPROJ:** No **FLDSURDAT:**
05/09/1986 **UTMCOOR:** N3757555 E658366 **TOPOQUAD:** Brittons Neck

COUNTY: Horry **BAYID:** 1800582816 **COMPLEX:** No **LALENGTH:** 1875 **PCNTDIST:** 0 **DISTTYPE:** None **SANDRIM:** Absent **SURRLAND:** RC, LO **BAYTYPE:** Nonalluvial swamp **DISTCOMM:** None **CANOPY:** Acer rubrum, Liquidamber styraciflua, Taxodium ascendens, Nyssa biflora, Pinus taeda **SHRUB:** Sassafras albidum, Ilex spp., Clethra alnifolia, Lyonia spp., Persea borbonia, Itea virginica, Myrica spp., Magnolia spp. **GRNDCOV:** Osmunda spp., Goodyera pubens, Vitis rotundifolia, Woodwardia spp., Sphagnum spp. **SIGNATEL:** No info **OWNER:** No info **PROTPROJ:** No **FLDSURDAT:** 05/13/1986 **UTMCOOR:** N3791921 E674832 **TOPOQUAD:** Fair Bluff

COUNTY: Horry **BAYID:** 1800762713 **COMPLEX:** No **LALENGTH:** 1042 **PCNTDIST:** 9 **DISTTYPE:** RC, RE, RM **SANDRIM:** Absent **SURRLAND:** RC, LO, RE **BAYTYPE:** Nonalluvial swamp **DISTCOMM:** Trees cut, trash **CANOPY:** Pinus taeda, Quercus nigra, Acer rubrum **SHRUB:** Magnolia virginia, Persea borbonia, Ilex c. **GRNDCOV:** Osmunda spp., Syngonanthus spp. **SIGNATEL:** No info **OWNER:** No info **PROTPROJ:** No **FLDSURDAT:** No info **UTMCOOR:** N3746110 E662427 **TOPOQUAD:** Dongola

COUNTY: Horry **BAYID:** 1800762711 **COMPLEX:** No **LALENGTH:** 1250 **PCNTDIST:** 6 **DISTTYPE:** RC, RM **SANDRIM:** Absent **SURRLAND:** RC, LO, RE **BAYTYPE:** Nonalluvial swamp **DISTCOMM:** Trees cut, trash **CANOPY:** Acer rubrum., Pinus taeda, Taxodium d. **SHRUB:** Myrica cerifera, Persea borbonia, Magnolia virginia, Ilex myrtifolia, Lyonia a. **GRNDCOV:** Centella asiatica, Iris spp., Sarracenia minor **SIGNATEL:** No info **OWNER:** No info **PROTPROJ:** No **FLDSURDAT:** No info **UTMCOOR:** N3746280 E668220 **TOPOQUAD:** Dongola

COUNTY: Horry **BAYID:** 1801161818 **COMPLEX:** Yes **LALENGTH:** 1250 **PCNTDIST:** 17 **DISTTYPE:** DI, RC, PP, RE **SANDRIM:** Absent **SURRLAND:** RC, PP, LO, RE **BAYTYPE:** Pocosin **DISTCOMM:** No info **CANOPY:** Gordonia lasianthus, Pinus serotina **SHRUB:** Lyonia lucida, Clethra alinifolia, Kalmia angustifolia, Cyrilla racemosa, Ilex coriaceae, Vaccinium corymbosum, Zenobia pulverulenta **GRNDCOV:** No info **SIGNATEL:** No info **OWNER:** No info **PROTPROJ:** No **FLDSURDAT:** No info **UTMCOOR:** N3767000 E687000 (vicinity) **TOPOQUAD:** Loris

COUNTY: Horry **BAYID:** 1801161819 **COMPLEX:** Yes **LALENGTH:** 625 **PCNTDIST:** 89 **DISTTYPE:** LO **SANDRIM:** Absent **SURRLAND:** RC, LO, RE **BAYTYPE:** Pocosin **DISTCOMM:** No info **CANOPY:** Gordonia lasianthus, Pinus serotina **SHRUB:** Lyonia lucida, Clethra alinifolia, Kalmia angustifolia, Cyrilla racemosa, Ilex coriaceae, Vaccinium corymbosum, Zenobia pulverulenta **GRNDCOV:** No info **SIGNATEL:** No info **OWNER:** No info **PROTPROJ:** No **FLDSURDAT:** No info **UTMCOOR:** N3767000 E687000 (vicinity) **TOPOQUAD:** Loris

COUNTY: Horry **BAYID:** 1801161821 **COMPLEX:** Yes **LALENGTH:** 833 **PCNTDIST:** 30 **DISTTYPE:** DI, RC, LO **SANDRIM:** Absent **SURRLAND:** RC, LO **BAYTYPE:** Pocosin **DISTCOMM:** No info **CANOPY:** Gordonia lasianthus, Pinus serotina **SHRUB:** Lyonia lucida, Clethra alinifolia, Kalmia angustifolia, Cyrilla racemosa, Ilex coriaceae, Vaccinium corymbosum, Zenobia pulverulenta **GRNDCOV:** No info **SIGNATEL:** No info **OWNER:** No info **PROTPROJ:** No **FLDSURDAT:** No info **UTMCOOR:** N3767000 E687000 (vicinity) **TOPOQUAD:** Loris

COUNTY: Horry **BAYID:** 1801161918 **COMPLEX:** Yes **LALENGTH:** 1042 **PCNTDIST:** 8 **DISTTYPE:** DI, RC, LO **SANDRIM:** Absent **SURRLAND:** RC, PP, LO **BAYTYPE:** Pocosin **DISTCOMM:** No info **CANOPY:** Gordonia lasianthus, Pinus serotina **SHRUB:** Lyonia lucida, Clethra alinifolia, Kalmia angustifolia, Cyrilla racemosa, Ilex coriaceae, Vaccinium corymbosum, Zenobia pulverulenta **GRNDCOV:** No info **SIGNATEL:** No info **OWNER:** No info **PROTPROJ:** No **FLDSURDAT:** No info **UTMCOOR:** N3767000 E687000 (vicinity) **TOPOQUAD:** Loris

COUNTY: Horry **BAYID:** 1801161921 **COMPLEX:** Yes **LALength:** 1458 **PCNTDIST:** 22 **DISTTYPE:** DI, RC **SANDRIM:** Absent **SURRLAND:** RC, LO **BAYTYPE:** Pocosin **DISTCOMM:** No info **CANOPY:** Gordonia lasianthus, Pinus serotina **SHRUB:** Lyonia lucida, Clethra alnifolia, Kalmia angustifolia, Cyrilla racemosa, Ilex coriacea, Vaccinium corymbosum, Zenobia pulverulenta **GRNDCOV:** No info **SIGNATEL:** No info **OWNER:** No info **PROT PROJ:** No **FLDSURDAT:** No info **UTMCOOR:** N3767000 E687000 (vicinity) **TOPOQUAD:** Loris

COUNTY: Horry **BAYID:** 1801162017 **COMPLEX:** Yes **LALength:** 1250 **PCNTDIST:** 60 **DISTTYPE:** DI, RC, LO, RM **SANDRIM:** Absent **SURRLAND:** RC, LO, RE **BAYTYPE:** Pocosin **DISTCOMM:** No info **CANOPY:** Gordonia lasianthus, Pinus serotina **SHRUB:** Lyonia lucida, Clethra alnifolia, Kalmia angustifolia, Cyrilla racemosa, Ilex coriacea, Vaccinium corymbosum, Zenobia pulverulenta **GRNDCOV:** No info **SIGNATEL:** No info **OWNER:** No info **PROT PROJ:** No **FLDSURDAT:** No info **UTMCOOR:** N3767000 E687000 (vicinity) **TOPOQUAD:** Loris

COUNTY: Horry **BAYID:** 1801162019 **COMPLEX:** Yes **LALength:** 833 **PCNTDIST:** 18 **DISTTYPE:** DI, PP, LO **SANDRIM:** Absent **SURRLAND:** RC, PP, LO **BAYTYPE:** Pocosin **DISTCOMM:** No info **CANOPY:** Gordonia lasianthus, Pinus serotina **SHRUB:** Lyonia lucida, Clethra alnifolia, Kalmia angustifolia, Cyrilla racemosa, Ilex coriacea, Vaccinium corymbosum, Zenobia pulverulenta **GRNDCOV:** No info **SIGNATEL:** No info **OWNER:** No info **PROT PROJ:** No **FLDSURDAT:** No info **UTMCOOR:** N3767000 E687000 (vicinity) **TOPOQUAD:** Loris

COUNTY: Horry **BAYID:** 1801162116 **COMPLEX:** Yes **LALength:** 833 **PCNTDIST:** 3 **DISTTYPE:** RC **SANDRIM:** Absent **SURRLAND:** RC, LO, RE **BAYTYPE:** Pocosin **DISTCOMM:** No info **CANOPY:** Gordonia lasianthus, Pinus serotina **SHRUB:** Lyonia lucida, Clethra alnifolia, Kalmia angustifolia, Cyrilla racemosa, Ilex coriacea, Vaccinium corymbosum, Zenobia pulverulenta **GRNDCOV:** No info **SIGNATEL:** No info **OWNER:** No info **PROT PROJ:** No **FLDSURDAT:** No info **UTMCOOR:** N3767000 E687000 (vicinity) **TOPOQUAD:** Loris

COUNTY: Horry **BAYID:** 1801162221 **COMPLEX:** Yes **LALength:** 625 **PCNTDIST:** 28 **DISTTYPE:** RC, RE **SANDRIM:** Absent **SURRLAND:** RC, LO, RE **BAYTYPE:** Pocosin **DISTCOMM:** No info **CANOPY:** Gordonia lasianthus, Pinus serotina **SHRUB:** Lyonia lucida, Clethra alnifolia, Kalmia angustifolia, Cyrilla racemosa, Ilex coriacea, Vaccinium corymbosum, Zenobia pulverulenta **GRNDCOV:** No info **SIGNATEL:** No info **OWNER:** No info **PROT PROJ:** No **FLDSURDAT:** No info **UTMCOOR:** N3767000 E687000 (vicinity) **TOPOQUAD:** Loris

COUNTY: Horry **BAYID:** 1801162315 **COMPLEX:** Yes **LALength:** 1042 **PCNTDIST:** 0 **DISTTYPE:** None **SANDRIM:** Absent **SURRLAND:** RC, LO **BAYTYPE:** Pocosin **DISTCOMM:** No info **CANOPY:** Gordonia lasianthus, Pinus serotina **SHRUB:** Lyonia lucida, Clethra alnifolia, Kalmia angustifolia, Cyrilla racemosa, Ilex coriacea, Vaccinium corymbosum, Zenobia pulverulenta **GRNDCOV:** No info **SIGNATEL:** No info **OWNER:** No info **PROT PROJ:** No **FLDSURDAT:** No info **UTMCOOR:** N3767000 E687000 (vicinity) **TOPOQUAD:** Loris

COUNTY: Horry **BAYID:** 1801162419 **COMPLEX:** Yes **LALength:** 1250 **PCNTDIST:** 7 **DISTTYPE:** RC, RE, RO **SANDRIM:** Absent **SURRLAND:** RC, LO **BAYTYPE:** Pocosin **DISTCOMM:** No info **CANOPY:** Gordonia lasianthus, Pinus serotina **SHRUB:** Lyonia lucida, Clethra alnifolia, Kalmia angustifolia, Cyrilla racemosa, Ilex coriacea, Vaccinium corymbosum, Zenobia pulverulenta **GRNDCOV:** No info **SIGNATEL:** No info **OWNER:** No info **PROT PROJ:** No **FLDSURDAT:** No info **UTMCOOR:** N3767000 E687000 (vicinity) **TOPOQUAD:** Loris

COUNTY: Horry **BAYID:** 1801162316 **COMPLEX:** Yes **LALENGTH:** 1042 **PCNTDIST:** 0 **DISTTYPE:** None **SANDRIM:** Absent **SURRLAND:** RC, LO **BAYTYPE:** Pocosin **DISTCOMM:** No info **CANOPY:** Gordonia lasianthus, Pinus serotina **SHRUB:** Lyonia lucida, Clethra alinifolia, Kalmia angustifolia, Cyrilla racemosa, Ilex coriacea, Vaccinium corymbosum, Zenobia pulverulenta **GRNDCOV:** No info **SIGNATEL:** No info **OWNER:** No info **PROTPROJ:** No **FLDSURDAT:** No info **UTMCOOR:** N3767000 E687000 (vicinity) **TOPOQUAD:** Loris

COUNTY: Horry **BAYID:** 1801162321 **COMPLEX:** Yes **LALENGTH:** 625 **PCNTDIST:** 8 **DISTTYPE:** RC, RE **SANDRIM:** Absent **SURRLAND:** RC, LO **BAYTYPE:** Pocosin **DISTCOMM:** No info **CANOPY:** Gordonia lasianthus, Pinus serotina **SHRUB:** Lyonia lucida, Clethra alinifolia, Kalmia angustifolia, Cyrilla racemosa, Ilex coriacea, Vaccinium corymbosum, Zenobia pulverulenta **GRNDCOV:** No info **SIGNATEL:** No info **OWNER:** No info **PROTPROJ:** No **FLDSURDAT:** No info **UTMCOOR:** N3767000 E687000 (vicinity) **TOPOQUAD:** Loris

COUNTY: Horry **BAYID:** 1801162416 **COMPLEX:** Yes **LALENGTH:** 1042 **PCNTDIST:** 0 **DISTTYPE:** None **SANDRIM:** Absent **SURRLAND:** RC, LO **BAYTYPE:** Pocosin **DISTCOMM:** No info **CANOPY:** Gordonia lasianthus, Pinus serotina **SHRUB:** Lyonia lucida, Clethra alinifolia, Kalmia angustifolia, Cyrilla racemosa, Ilex coriacea, Vaccinium corymbosum, Zenobia pulverulenta **GRNDCOV:** No info **SIGNATEL:** No info **OWNER:** No info **PROTPROJ:** No **FLDSURDAT:** No info **UTMCOOR:** N3767000 E687000 (vicinity) **TOPOQUAD:** Loris

COUNTY: Horry **BAYID:** 1801162418 **COMPLEX:** Yes **LALENGTH:** 417 **PCNTDIST:** 0 **DISTTYPE:** None **SANDRIM:** Absent **SURRLAND:** RC, LO **BAYTYPE:** Pocosin **DISTCOMM:** No info **CANOPY:** Gordonia lasianthus, Pinus serotina **SHRUB:** Lyonia lucida, Clethra alinifolia, Kalmia angustifolia, Cyrilla racemosa, Ilex coriacea, Vaccinium corymbosum, Zenobia pulverulenta **GRNDCOV:** No info **SIGNATEL:** No info **OWNER:** No info **PROTPROJ:** No **FLDSURDAT:** No info **UTMCOOR:** N3767000 E687000 (vicinity) **TOPOQUAD:** Loris

COUNTY: Horry **BAYID:** 1801162719 **COMPLEX:** Yes **LALENGTH:** 1666 **PCNTDIST:** 0 **DISTTYPE:** None **SANDRIM:** SE **SURRLAND:** RC, LO **BAYTYPE:** Pocosin **DISTCOMM:** No info **CANOPY:** Gordonia lasianthus, Pinus serotina **SHRUB:** Lyonia lucida, Clethra alinifolia, Kalmia angustifolia, Cyrilla racemosa, Ilex coriacea, Vaccinium corymbosum, Zenobia pulverulenta **GRNDCOV:** No info **SIGNATEL:** No info **OWNER:** No info **PROTPROJ:** No **FLDSURDAT:** No info **UTMCOOR:** N3767000 E687000 (vicinity) **TOPOQUAD:** Loris

COUNTY: Horry **BAYID:** 1801162816 **COMPLEX:** Yes **LALENGTH:** 833 **PCNTDIST:** 6 **DISTTYPE:** RC **SANDRIM:** Absent **SURRLAND:** RC, LO **BAYTYPE:** Pocosin **DISTCOMM:** No info **CANOPY:** Gordonia lasianthus, Pinus serotina **SHRUB:** Lyonia lucida, Clethra alinifolia, Kalmia angustifolia, Cyrilla racemosa, Ilex coriacea, Vaccinium corymbosum, Zenobia pulverulenta **GRNDCOV:** No info **SIGNATEL:** No info **OWNER:** No info **PROTPROJ:** No **FLDSURDAT:** No info **UTMCOOR:** N3767000 E687000 (vicinity) **TOPOQUAD:** Loris

COUNTY: Horry **BAYID:** 1801162819 **COMPLEX:** Yes **LALENGTH:** 625 **PCNTDIST:** 12 **DISTTYPE:** RC, LO, FP **SANDRIM:** Absent **SURRLAND:** RC, LO **BAYTYPE:** Pocosin **DISTCOMM:** No info **CANOPY:** Gordonia lasianthus, Pinus serotina **SHRUB:** Lyonia lucida, Clethra alinifolia, Kalmia angustifolia, Cyrilla racemosa, Ilex coriacea, Vaccinium corymbosum, Zenobia pulverulenta **GRNDCOV:** No info **SIGNATEL:** No info **OWNER:** No info **PROTPROJ:** No **FLDSURDAT:** No info **UTMCOOR:** N3767000 E687000 (vicinity) **TOPOQUAD:** Loris

COUNTY: Horry **BAYID:** 1801162913 **COMPLEX:** Yes **LALength:** 1458 **PCNTDIST:** 99 **DISTTYPE:** RC, PP, RE, RO **SANDRIM:** Absent **SURRLAND:** RC, PP, LO, RE **BAYTYPE:** Pocosin **DISTCOMM:** No info **CANOPY:** Gordonia lasianthus, Pinus serotina **SHRUB:** Lyonia lucida, Clethra alnifolia, Kalmia angustifolia, Cyrilla racemosa, Ilex coriacea, Vaccinium corymbosum, Zenobia pulverulenta **GRNDCOV:** No info **SIGNATEL:** No info **OWNER:** No info **PROTPROJ:** No **FLDSURDAT:** No info **UTMCOOR:** N3767000 E687000 (vicinity) **TOPOQUAD:** Loris

COUNTY: Horry **BAYID:** 1801162918 **COMPLEX:** Yes **LALength:** 1458 **PCNTDIST:** 2 **DISTTYPE:** RC **SANDRIM:** SE **SURRLAND:** RC, LO **BAYTYPE:** Pocosin **DISTCOMM:** No info **CANOPY:** Gordonia lasianthus, Pinus serotina **SHRUB:** Lyonia lucida, Clethra alnifolia, Kalmia angustifolia, Cyrilla racemosa, Ilex coriacea, Vaccinium corymbosum, Zenobia pulverulenta **GRNDCOV:** No info **SIGNATEL:** No info **OWNER:** No info **PROTPROJ:** No **FLDSURDAT:** No info **UTMCOOR:** N3767000 E687000 (vicinity) **TOPOQUAD:** Loris

COUNTY: Horry **BAYID:** 1801741513 **COMPLEX:** Yes **LALength:** 1875 **PCNTDIST:** 4 **DISTTYPE:** PP, ROW **SANDRIM:** SE, SW **SURRLAND:** PP, LO **BAYTYPE:** Pocosin **DISTCOMM:** Road through sand rim, power lines **CANOPY:** Gordonia lasianthus, Pinus serotina **SHRUB:** Lyonia lucida, Clethra alnifolia, Kalmia angustifolia, Cyrilla racemosa, Ilex coriacea, Vaccinium corymbosum, Zenobia pulverulenta **GRNDCOV:** No info **SIGNATEL:** Dionaea muscipula, Peltandra sagittifolia, Asclepia spedicillata, Ursus americana **OWNER:** No info **PROTPROJ:** No **FLDSURDAT:** No info **UTMCOOR:** N3741000 E702000 (vicinity) **TOPOQUAD:** Hand

COUNTY: Horry **BAYID:** 1801741523 **COMPLEX:** Yes **LALength:** 1458 **PCNTDIST:** 7 **DISTTYPE:** DI, PP **SANDRIM:** SE, SW **SURRLAND:** PP, LO **BAYTYPE:** Pocosin **DISTCOMM:** Road through sand rim, power lines **CANOPY:** Gordonia lasianthus, Pinus serotina **SHRUB:** Lyonia lucida, Clethra alnifolia, Kalmia angustifolia, Cyrilla racemosa, Ilex coriacea, Vaccinium corymbosum, Zenobia pulverulenta **GRNDCOV:** No info **SIGNATEL:** Dionaea muscipula, Peltandra sagittifolia, Asclepia spedicillata, Ursus americana **OWNER:** No info **PROTPROJ:** No **FLDSURDAT:** No info **UTMCOOR:** N3741000 E702000 (vicinity) **TOPOQUAD:** Hand

COUNTY: Horry **BAYID:** 1801721728 **COMPLEX:** Yes **LALength:** 1458 **PCNTDIST:** 3 **DISTTYPE:** PP **SANDRIM:** Absent **SURRLAND:** PP, LO **BAYTYPE:** Pocosin **DISTCOMM:** Roads along sand rim, some ditches (filled in) **CANOPY:** Gordonia lasianthus, Pinus serotina **SHRUB:** Lyonia lucida, Clethra alnifolia, Kalmia angustifolia, Cyrilla racemosa, Ilex coriacea, Vaccinium corymbosum, Zenobia pulverulenta **GRNDCOV:** No info **SIGNATEL:** Dionaea muscipula, Peltandra sagittifolia, Asclepia spedicillata, Ursus americana **OWNER:** No info **PROTPROJ:** No **FLDSURDAT:** No info **UTMCOOR:** N3741000 E702000 (vicinity) **TOPOQUAD:** Hand

COUNTY: Horry **BAYID:** 1801742014 **COMPLEX:** Yes **LALength:** 5624 **PCNTDIST:** 4 **DISTTYPE:** ROW **SANDRIM:** SE, SW **SURRLAND:** PP, LO **BAYTYPE:** Pocosin **DISTCOMM:** Road through sand rim, power lines **CANOPY:** Gordonia lasianthus, Pinus serotina **SHRUB:** Lyonia lucida, Clethra alnifolia, Kalmia angustifolia, Cyrilla racemosa, Ilex coriacea, Vaccinium corymbosum, Zenobia pulverulenta **GRNDCOV:** No info **SIGNATEL:** Dionaea muscipula, Peltandra sagittifolia, Asclepias pedicillata, Ursus americana **OWNER:** No info **PROTPROJ:** No **FLDSURDAT:** No info **UTMCOOR:** N3741000 E702000 (vicinity) **TOPOQUAD:** Hand

COUNTY: Horry **BAYID:** 1801721929 **COMPLEX:** Yes **LALength:** 1042 **PCNTDIST:** 3 **DISTTYPE:** PP **SANDRIM:** SE **SURRLAND:** PP, LO **BAYTYPE:** Pocosin **DISTCOMM:** Roads along sand rim, some ditches (filled in) **CANOPY:** Gordonia lasianthus, Pinus serotina **SHRUB:** Lyonia lucida, Clethra alnifolia, Kalmia angustifolia, Cyrilla racemosa, Ilex coriacea, Vaccinium corymbosum, Zenobia pulverulenta **GRNDCOV:** No info **SIGNATEL:** Dionaea muscipula, Peltandra sagittifolia, Asclepia spedicillata, Ursus americana **OWNER:** No info **PROTPROJ:** No **FLDSURDAT:** No info **UTMCOOR:** N3741000 E702000 (vicinity) **TOPOQUAD:** Hand

COUNTY: Horry **BAYID:** 1801741714 **COMPLEX:** Yes **LALENGTH:** 1458 **PCNTDIST:** 8 **DISTTYPE:** PP, ROW **SANDRIM:** SE, SW **SURRLAND:** PP, LO **BAYTYPE:** Pocosin **DISTCOMM:** Road through sand rim, power lines **CANOPY:** Gordonia lasianthus, Pinus serotina **SHRUB:** Lyonia lucida, Clethra alinifolia, Kalmia angustifolia, Cyrilla racemosa, Ilex coriacea, Vaccinium corymbosum, Zenobia pulverulenta **GRNDCOV:** No info **SIGNATEL:** Dionaea muscipula, Peltandra sagittifolia, Asclepia spedicillata, Ursus americana **OWNER:** No info **PROTPROJ:** No **FLDSURDAT:** No info **UTMCOOR:** N3741000 E702000 (vicinity) **TOPOQUAD:** Hand

COUNTY: Horry **BAYID:** 1801722730 **COMPLEX:** Yes **LALENGTH:** 3750 **PCNTDIST:** 0 **DISTTYPE:** None **SANDRIM:** SE, SW **SURRLAND:** PP, LO **BAYTYPE:** Pocosin **DISTCOMM:** Roads along sand rim, some ditches, 4 filled in **CANOPY:** Gordonia lasianthus, Pinus serotina **SHRUB:** Lyonia lucida, Clethra alinifolia, Kalmia angustifolia, Cyrilla racemosa, Ilex coriacea, Vaccinium corymbosum, Zenobia pulverulenta **GRNDCOV:** No info **SIGNATEL:** Dionaea muscipula, Peltandra sagittifolia, Asclepia spedicillata, Ursus americana **OWNER:** No info **PROTPROJ:** No **FLDSURDAT:** No info **UTMCOOR:** N3741000 E702000 (vicinity) **TOPOQUAD:** Hand

COUNTY: Horry **BAYID:** 1801741717 **COMPLEX:** Yes **LALENGTH:** 2916 **PCNTDIST:** 12 **DISTTYPE:** DI, PP, RM **SANDRIM:** SE, SW, NE **SURRLAND:** PP, LO **BAYTYPE:** Pocosin **DISTCOMM:** Road through sand rim, power lines **CANOPY:** Gordonia lasianthus, Pinus serotina **SHRUB:** Lyonia lucida, Clethra alinifolia, Kalmia angustifolia, Cyrilla racemosa, Ilex coriacea, Vaccinium corymbosum, Zenobia pulverulenta **GRNDCOV:** No info **SIGNATEL:** Dionaea muscipula, Peltandra sagittifolia, Asclepia spedicillata, Ursus americana **OWNER:** No info **PROTPROJ:** No **FLDSURDAT:** No info **UTMCOOR:** N3741000 E702000 (vicinity) **TOPOQUAD:** Hand

COUNTY: Horry **BAYID:** 1801723131 **COMPLEX:** Yes **LALENGTH:** 2708 **PCNTDIST:** 1 **DISTTYPE:** DI **SANDRIM:** SE, SW **SURRLAND:** PP, LO **BAYTYPE:** Pocosin **DISTCOMM:** Roads along sand rim, some ditches (filled in) **CANOPY:** Gordonia lasianthus, Pinus serotina **SHRUB:** Lyonia lucida, Clethra alinifolia, Kalmia angustifolia, Cyrilla racemosa, Ilex coriacea, Vaccinium corymbosum, Zenobia pulverulenta **GRNDCOV:** No info **SIGNATEL:** Dionaea muscipula, Peltandra sagittifolia, Asclepia spedicillata, Ursus americana **OWNER:** No info **PROTPROJ:** No **FLDSURDAT:** No info **UTMCOOR:** N3741000 E702000 (vicinity) **TOPOQUAD:** Hand

COUNTY: Horry **BAYID:** 1801741724 **COMPLEX:** Yes **LALENGTH:** 1042 **PCNTDIST:** 6 **DISTTYPE:** DI, PP **SANDRIM:** SE, SW, NE **SURRLAND:** PP, LO **BAYTYPE:** Pocosin **DISTCOMM:** Road through sand rim, power lines **CANOPY:** Gordonia lasianthus, Pinus serotina **SHRUB:** Lyonia lucida, Clethra alinifolia, Kalmia angustifolia, Cyrilla racemosa, Ilex coriacea, Vaccinium corymbosum, Zenobia pulverulenta **GRNDCOV:** No info **SIGNATEL:** Dionaea muscipula, Peltandra sagittifolia, Asclepia spedicillata, Ursus americana **OWNER:** No info **PROTPROJ:** No **FLDSURDAT:** No info **UTMCOOR:** N3741000 E702000 (vicinity) **TOPOQUAD:** Hand

COUNTY: Horry **BAYID:** 1801741313 **COMPLEX:** Yes **LALENGTH:** 1875 **PCNTDIST:** 8 **DISTTYPE:** PP **SANDRIM:** SE, SW **SURRLAND:** PP, LO **BAYTYPE:** Pocosin **DISTCOMM:** Roads along sand rim, some ditches (filled in) **CANOPY:** Gordonia lasianthus, Pinus serotina **SHRUB:** Lyonia lucida, Clethra alinifolia, Kalmia angustifolia, Cyrilla racemosa, Ilex coriacea, Vaccinium corymbosum, Zenobia pulverulenta **GRNDCOV:** No info **SIGNATEL:** Dionaea muscipula, Peltandra sagittifolia, Asclepia spedicillata, Ursus americana **OWNER:** No info **PROTPROJ:** No **FLDSURDAT:** No info **UTMCOOR:** N3741000 E702000 (vicinity) **TOPOQUAD:** Hand

COUNTY: Horry **BAYID:** 1801741813 **COMPLEX:** Yes **LALength:** 417 **PCNTDIST:** 5 **DISTTYPE:** DI, ROW **SANDRIM:** Absent **SURRLAND:** PP, LO **BAYTYPE:** Pocosin **DISTCOMM:** Road through sand rim, power lines **CANOPY:** Gordonia lasianthus, Pinus serotina **SHRUB:** Lyonia lucida, Clethra alnifolia, Kalmia angustifolia, Cyrilla racemosa, Ilex coriacea, Vaccinium corymbosum, Zenobia pulverulenta **GRNDCOV:** No info **SIGNATEL:** Dionaea muscipula, Peltandra sagittifolia, Asclepia spedicillata, Ursus americana **OWNER:** No info **PROTPROJ:** No **FLDSURDAT:** No info **UTMCOOR:** N3741000 E702000 (vicinity) **TOPOQUAD:** Hand

COUNTY: Horry **BAYID:** 1801721730 **COMPLEX:** Yes **LALength:** 417 **PCNTDIST:** 7 **DISTTYPE:** PP **SANDRIM:** Absent **SURRLAND:** PP, LO **BAYTYPE:** Pocosin **DISTCOMM:** Roads along sand rim, some ditches (filled in) **CANOPY:** Gordonia lasianthus, Pinus serotina **SHRUB:** Lyonia lucida, Clethra alnifolia, Kalmia angustifolia, Cyrilla racemosa, Ilex coriacea, Vaccinium corymbosum, Zenobia pulverulenta **GRNDCOV:** No info **SIGNATEL:** Dionaea muscipula, Peltandra sagittifolia, Asclepia spedicillata, Ursus americana **OWNER:** No info **PROTPROJ:** No **FLDSURDAT:** No info **UTMCOOR:** N3741000 E702000 (vicinity) **TOPOQUAD:** Hand

COUNTY: Horry **BAYID:** 1801722931 **COMPLEX:** Yes **LALength:** 3750 **PCNTDIST:** 2 **DISTTYPE:** PP, RM **SANDRIM:** SE, NE **SURRLAND:** PP, LO **BAYTYPE:** Pocosin **DISTCOMM:** Roads along sand rim, some ditches (fill) **CANOPY:** Gordonia lasianthus, Pinus serotina **SHRUB:** Lyonia lucida, Clethra alnifolia, Kalmia angustifolia, Cyrilla racemosa, Ilex coriacea, Vaccinium corymbosum, Zenobia pulverulenta **GRNDCOV:** No info **SIGNATEL:** Dionaea muscipula, Peltandra sagittifolia, Asclepia spedicillata, Ursus americana **OWNER:** No info **PROTPROJ:** No **FLDSURDAT:** No info **UTMCOOR:** N3741000 E702000 (vicinity) **TOPOQUAD:** Hand

COUNTY: Horry **BAYID:** 1801723230 **COMPLEX:** Yes **LALength:** 2083 **PCNTDIST:** 1 **DISTTYPE:** DI **SANDRIM:** SE, SW **SURRLAND:** PP, LO **BAYTYPE:** Pocosin **DISTCOMM:** Roads along sand rim, some ditches (filled in) **CANOPY:** Gordonia lasianthus, Pinus serotina **SHRUB:** Lyonia lucida, Clethra alnifolia, Kalmia angustifolia, Cyrilla racemosa, Ilex coriacea, Vaccinium corymbosum, Zenobia pulverulenta **GRNDCOV:** No Info **SIGNATEL:** Dionaea muscipula, Peltandra sagittifolia, Asclepia spedicillata, Ursus americana **OWNER:** No Info **PROTPROJ:** No **FLDSURDAT:** No info **UTMCOOR:** N3741000 E702000 (vicinity) **TOPOQUAD:** Hand

COUNTY: Horry **BAYID:** 1801711329 **COMPLEX:** Yes **LALength:** 4166 **PCNTDIST:** 4 **DISTTYPE:** DI, PP, RO **SANDRIM:** NE, SE **SURRLAND:** PP, LO **BAYTYPE:** Pocosin **DISTCOMM:** Roads along sand rim, some ditches (filled in) **CANOPY:** Gordonia lasianthus, Pinus serotina **SHRUB:** Lyonia lucida, Clethra alnifolia, Kalmia angustifolia, Cyrilla racemosa, Ilex coriacea, Vaccinium corymbosum, Zenobia pulverulenta **GRNDCOV:** No info **SIGNATEL:** Dionaea muscipula, Peltandra sagittifolia, Asclepia spedicillata, Ursus americana **OWNER:** No info **PROTPROJ:** No **FLDSURDAT:** No info **UTMCOOR:** N3741000 E702000 (vicinity) **TOPOQUAD:** Hand

COUNTY: Horry **BAYID:** 1801741918 **COMPLEX:** Yes **LALength:** 2916 **PCNTDIST:** 17 **DISTTYPE:** PP, RO **SANDRIM:** SE, SW **SURRLAND:** PP, LO **BAYTYPE:** Pocosin **DISTCOMM:** Road through sand rim, power lines **CANOPY:** Gordonia lasianthus, Pinus serotina **SHRUB:** Lyonia lucida, Clethra alnifolia, Kalmia angustifolia, Cyrilla racemosa, Ilex coriacea, Vaccinium corymbosum, Zenobia pulverulenta **GRNDCOV:** No info **SIGNATEL:** Dionaea muscipula, Peltandra sagittifolia, Asclepia spedicillata, Ursus americana **OWNER:** No info **PROTPROJ:** No **FLDSURDAT:** No info **UTMCOOR:** N3741000 E702000 (vicinity) **TOPOQUAD:** Hand

COUNTY: Horry **BAYID:** 1801741924 **COMPLEX:** Yes **LALENGTH:** 1458 **PCNTDIST:** 14 **DISTTYPE:** PP, RM, ROW **SANDRIM:** SE, SW **SURRLAND:** PP, LO **BAYTYPE:** Pocosin **DISTCOMM:** Road through sand rim, power lines **CANOPY:** Gordonia lasianthus, Pinus serotina **SHRUB:** Lyonia lucida, Clethra alinifolia, Kalmia angustifolia, Cyrilla racemosa, Ilex coriacea, Vaccinium corymbosum, Zenobia pulverulenta **GRNDCOV:** No info **SIGNATEL:** Dionaea muscipula, Peltandra sagittifolia, Asclepia spedicillata, Ursus americana **OWNER:** No info **PROTPROJ:** No **FLDSURDAT:** No info **UTMCOOR:** N3741000 E702000 (vicinity) **TOPOQUAD:** Hand

COUNTY: Horry **BAYID:** 1801742223 **COMPLEX:** Yes **LALENGTH:** 2083 **PCNTDIST:** 5 **DISTTYPE:** PP **SANDRIM:** SE, SW **SURRLAND:** PP, LO **BAYTYPE:** Pocosin **DISTCOMM:** Road through sand rim, power lines **CANOPY:** Gordonia lasianthus, Pinus serotina **SHRUB:** Lyonia lucida, Clethra alinifolia, Kalmia angustifolia, Cyrilla racemosa, Ilex coriacea, Vaccinium corymbosum, Zenobia pulverulenta **GRNDCOV:** No info **SIGNATEL:** Dionaea muscipula, Peltandra sagittifolia, Asclepia spedicillata, Ursus americana **OWNER:** No info **PROTPROJ:** No **FLDSURDAT:** No info **UTMCOOR:** N3741000 E702000 (vicinity) **TOPOQUAD:** Hand

COUNTY: Horry **BAYID:** 1801742017 **COMPLEX:** Yes **LALENGTH:** 1666 **PCNTDIST:** 6 **DISTTYPE:** DI, PP **SANDRIM:** SE, SW **SURRLAND:** PP, LO **BAYTYPE:** Pocosin **DISTCOMM:** Road through sand rim, power lines **CANOPY:** Gordonia lasianthus, Pinus serotina **SHRUB:** Lyonia lucida, Clethra alinifolia, Kalmia angustifolia, Cyrilla racemosa, Ilex coriacea, Vaccinium corymbosum, Zenobia pulverulenta **GRNDCOV:** No info **SIGNATEL:** Dionaea muscipula, Peltandra sagittifolia, Asclepia spedicillata, Ursus americana **OWNER:** No info **PROTPROJ:** No **FLDSURDAT:** No info **UTMCOOR:** N3741000 E702000 (vicinity) **TOPOQUAD:** Hand

COUNTY: Horry **BAYID:** 1801742019 **COMPLEX:** Yes **LALENGTH:** 3958 **PCNTDIST:** 4 **DISTTYPE:** DI, PP, RM **SANDRIM:** SE, SW, NW **SURRLAND:** PP, LO **BAYTYPE:** Pocosin **DISTCOMM:** Road through sand rim, power lines **CANOPY:** Gordonia lasianthus, Pinus serotina **SHRUB:** Lyonia lucida, Clethra alinifolia, Kalmia angustifolia, Cyrilla racemosa, Ilex coriacea, Vaccinium corymbosum, Zenobia pulverulenta **GRNDCOV:** No info **SIGNATEL:** Dionaea muscipula, Peltandra sagittifolia, Asclepia spedicillata, Ursus americana **OWNER:** No info **PROTPROJ:** No **FLDSURDAT:** No info **UTMCOOR:** N3741000 E702000 (vicinity) **TOPOQUAD:** Hand

COUNTY: Horry **BAYID:** 1801742318 **COMPLEX:** Yes **LALENGTH:** 6041 **PCNTDIST:** 2 **DISTTYPE:** DI, PP **SANDRIM:** SE, SW **SURRLAND:** PP, LO **BAYTYPE:** Pocosin **DISTCOMM:** Road through sand rim, power lines **CANOPY:** Gordonia lasianthus, Pinus serotina **SHRUB:** Lyonia lucida, Clethra alinifolia, Kalmia angustifolia, Cyrilla racemosa, Ilex coriacea, Vaccinium corymbosum, Zenobia pulverulenta **GRNDCOV:** No info **SIGNATEL:** Dionaea muscipula, Peltandra sagittifolia, Asclepia spedicillata, Ursus americana **OWNER:** No info **PROTPROJ:** No **FLDSURDAT:** No info **UTMCOOR:** N3741000 E702000 (vicinity) **TOPOQUAD:** Hand

COUNTY: Horry **BAYID:** 1801743020 **COMPLEX:** Yes **LALENGTH:** 4375 **PCNTDIST:** 6 **DISTTYPE:** DI, PP **SANDRIM:** SE, SW **SURRLAND:** PP, LO **BAYTYPE:** Pocosin **DISTCOMM:** Road through sand rim, power lines **CANOPY:** Gordonia lasianthus, Pinus serotina **SHRUB:** Lyonia lucida, Clethra alinifolia, Kalmia angustifolia, Cyrilla racemosa, Ilex coriacea, Vaccinium corymbosum, Zenobia pulverulenta **GRNDCOV:** No info **SIGNATEL:** Dionaea muscipula, Peltandra sagittifolia, Asclepia spedicillata, Ursus americana **OWNER:** No info **PROTPROJ:** No **FLDSURDAT:** No info **UTMCOOR:** N3741000 E702000 (vicinity) **TOPOQUAD:** Hand

COUNTY: Horry **BAYID:** 1801742213 **COMPLEX:** Yes **LALength:** 1042 **PCNTDIST:** 6 **DISTTYPE:** DI **SANDRIM:** SE, SW **SURRLAND:** LO **BAYTYPE:** Pocosin **DISTCOMM:** Road through sand rim, power lines **CANOPY:** Gordonia lasianthus, Pinus serotina **SHRUB:** Lyonia lucida, Clethra alinifolia, Kalmia angustifolia, Cyrilla racemosa, Ilex coriacea, Vaccinium corymbosum, Zenobia pulverulenta **GRNDCOV:** No info **SIGNATEL:** Dionaea muscipula, Peltandra sagittifolia, Asclepia spedicillata, Ursus americana **OWNER:** No info **PROTPROJ:** No **FLDSURDAT:** No info **UTMCOOR:** N3741000 E702000 (vicinity) **TOPOQUAD:** Hand

COUNTY: Horry **BAYID:** 1801742212 **COMPLEX:** Yes **LALength:** 1042 **PCNTDIST:** 13 **DISTTYPE:** ROW **SANDRIM:** NE, NW **SURRLAND:** PP, LO **BAYTYPE:** Pocosin **DISTCOMM:** Road through sand rim, power lines **CANOPY:** Gordonia lasianthus, Pinus serotina **SHRUB:** Lyonia lucida, Clethra alinifolia, Kalmia angustifolia, Cyrilla racemosa, Ilex coriacea, Vaccinium corymbosum, Zenobia pulverulenta **GRNDCOV:** No info **SIGNATEL:** Dionaea muscipula, Peltandra sagittifolia, Asclepia spedicillata, Ursus americana **OWNER:** No info **PROTPROJ:** No **FLDSURDAT:** No info **UTMCOOR:** N3741000 E702000 (vicinity) **TOPOQUAD:** Hand

COUNTY: Horry **BAYID:** 1801742413 **COMPLEX:** Yes **LALength:** 1458 **PCNTDIST:** 0 **DISTTYPE:** None **SANDRIM:** SE, SW, NE **SURRLAND:** LO **BAYTYPE:** Pocosin **DISTCOMM:** Road through sand rim, power lines **CANOPY:** Gordonia lasianthus, Pinus serotina **SHRUB:** Lyonia lucida, Clethra alinifolia, Kalmia angustifolia, Cyrilla racemosa, Ilex coriacea, Vaccinium corymbosum, Zenobia pulverulenta **GRNDCOV:** No info **SIGNATEL:** Dionaea muscipula, Peltandra sagittifolia, Asclepia spedicillata, Ursus americana **OWNER:** No info **PROTPROJ:** No **FLDSURDAT:** No info **UTMCOOR:** N3741000 E702000 (vicinity) **TOPOQUAD:** Hand

COUNTY: Horry **BAYID:** 1801743014 **COMPLEX:** Yes **LALength:** 8333 **PCNTDIST:** 2 **DISTTYPE:** ROW **SANDRIM:** SE, SW, NE **SURRLAND:** PP, LO **BAYTYPE:** Pocosin **DISTCOMM:** Road through sand rim, power lines **CANOPY:** Gordonia lasianthus, Pinus serotina **SHRUB:** Lyonia lucida, Clethra alinifolia, Kalmia angustifolia, Cyrilla racemosa, Ilex coriacea, Vaccinium corymbosum, Zenobia pulverulenta **GRNDCOV:** No info **SIGNATEL:** Dionaea muscipula, Peltandra sagittifolia, Asclepia spedicillata, Ursus americana **OWNER:** No info **PROTPROJ:** No **FLDSURDAT:** No info **UTMCOOR:** N3741000 E702000 (vicinity) **TOPOQUAD:** Hand

COUNTY: Horry **BAYID:** 1801742125 **COMPLEX:** Yes **LALength:** 1250 **PCNTDIST:** 8 **DISTTYPE:** PP, ROW **SANDRIM:** SE, SW **SURRLAND:** PP, LO **BAYTYPE:** Pocosin **DISTCOMM:** Road through sand rim, power lines **CANOPY:** Gordonia lasianthus, Pinus serotina **SHRUB:** Lyonia lucida, Clethra alinifolia, Kalmia angustifolia, Cyrilla racemosa, Ilex coriacea, Vaccinium corymbosum, Zenobia pulverulenta **GRNDCOV:** No info **SIGNATEL:** Dionaea muscipula, Peltandra sagittifolia, Asclepia spedicillata, Ursus americana **OWNER:** No info **PROTPROJ:** No **FLDSURDAT:** No info **UTMCOOR:** N3741000 E702000 (vicinity) **TOPOQUAD:** Hand

COUNTY: Horry **BAYID:** 1801742025 **COMPLEX:** Yes **LALength:** 833 **PCNTDIST:** 6 **DISTTYPE:** PP, ROW **SANDRIM:** NE, NW **SURRLAND:** PP, LO **BAYTYPE:** Pocosin **DISTCOMM:** Road through sand rim, power lines **CANOPY:** Gordonia lasianthus, Pinus serotina **SHRUB:** Lyonia lucida, Clethra alinifolia, Kalmia angustifolia, Cyrilla racemosa, Ilex coriacea, Vaccinium corymbosum, Zenobia pulverulenta **GRNDCOV:** No info **SIGNATEL:** Dionaea muscipula, Peltandra sagittifolia, Asclepia spedicillata, Ursus americana **OWNER:** No info **PROTPROJ:** No **FLDSURDAT:** No info **UTMCOOR:** N3741000 E702000 (vicinity) **TOPOQUAD:** Hand

COUNTY: Horry **BAYID:** 1801742515 **COMPLEX:** Yes **LALENGTH:** 1250 **PCNTDIST:** 0 **DISTTYPE:** None **SANDRIM:** SE, SW **SURRLAND:** LO **BAYTYPE:** Pocosin **DISTCOMM:** Road through sand rim, power lines **CANOPY:** Gordonia lasianthus, Pinus serotina **SHRUB:** Lyonia lucida, Clethra alinifolia, Kalmia angustifolia, Cyrilla racemosa, Ilex coriacea, Vaccinium corymbosum, Zenobia pulverulenta **GRNDCOV:** No info **SIGNATEL:** Dionaea muscipula, Peltandra sagittifolia, Asclepia spedicillata, Ursus americana **OWNER:** No info **PROTPROJ:** No **FLDSURDAT:** No info **UTMCOOR:** N3741000 E702000 (vicinity) **TOPOQUAD:** Hand

COUNTY: Horry **BAYID:** 1801742918 **COMPLEX:** Yes **LALENGTH:** 3750 **PCNTDIST:** 4 **DISTTYPE:** DI, PP **SANDRIM:** SE, SW **SURRLAND:** PP, LO **BAYTYPE:** Pocosin **DISTCOMM:** Road through sand rim, power lines **CANOPY:** Gordonia lasianthus, Pinus serotina **SHRUB:** Lyonia lucida, Clethra alinifolia, Kalmia angustifolia, Cyrilla racemosa, Ilex coriacea, Vaccinium corymbosum, Zenobia pulverulenta **GRNDCOV:** No info **SIGNATEL:** Dionaea muscipula, Peltandra sagittifolia, Asclepia spedicillata, Ursus americana **OWNER:** No info **PROTPROJ:** No **FLDSURDAT:** No info **UTMCOOR:** N3741000 E702000 (vicinity) **TOPOQUAD:** Hand

COUNTY: Horry **BAYID:** 1801742713 **COMPLEX:** Yes **LALENGTH:** 3333 **PCNTDIST:** 3 **DISTTYPE:** ROW **SANDRIM:** SE **SURRLAND:** LO **BAYTYPE:** Pocosin **DISTCOMM:** Road through sand rim, power lines **CANOPY:** Gordonia lasianthus, Pinus serotina **SHRUB:** Lyonia lucida, Clethra alinifolia, Kalmia angustifolia, Cyrilla racemosa, Ilex coriacea, Vaccinium corymbosum, Zenobia pulverulenta **GRNDCOV:** No info **SIGNATEL:** Dionaea muscipula, Peltandra sagittifolia, Asclepia spedicillata, Ursus americana **OWNER:** No info **PROTPROJ:** No **FLDSURDAT:** No info **UTMCOOR:** N3741000 E702000 (vicinity) **TOPOQUAD:** Hand

COUNTY: Horry **BAYID:** 1801742617 **COMPLEX:** Yes **LALENGTH:** 2708 **PCNTDIST:** 5 **DISTTYPE:** PP, RO **SANDRIM:** SW, NE **SURRLAND:** PP, LO **BAYTYPE:** Pocosin **DISTCOMM:** Road through sand rim, power lines **CANOPY:** Gordonia lasianthus, Pinus serotina **SHRUB:** Lyonia lucida, Clethra alinifolia, Kalmia angustifolia, Cyrilla racemosa, Ilex coriacea, Vaccinium corymbosum, Zenobia pulverulenta **GRNDCOV:** No info **SIGNATEL:** Dionaea muscipula, Peltandra sagittifolia, Asclepias rpedicillata, Ursus americana **OWNER:** No info **PROTPROJ:** No **FLDSURDAT:** No info **UTMCOOR:** N3741000 E702000 (vicinity) **TOPOQUAD:** Hand

COUNTY: Horry **BAYID:** 1801742521 **COMPLEX:** Yes **LALENGTH:** 3958 **PCNTDIST:** 4 **DISTTYPE:** DI, PP, RO **SANDRIM:** SE, SW, NE **SURRLAND:** PP, LO **BAYTYPE:** Pocosin **DISTCOMM:** Road through sand rim, power lines **CANOPY:** Gordonia lasianthus, Pinus serotina **SHRUB:** Lyonia lucida, Clethra alinifolia, Kalmia angustifolia, Cyrilla racemosa, Ilex coriacea, Vaccinium corymbosum, Zenobia pulverulenta **GRNDCOV:** No info **SIGNATEL:** Dionaea muscipula, Peltandra sagittifolia, Asclepia spedicillata, Ursus americana **OWNER:** No info **PROTPROJ:** No **FLDSURDAT:** No info **UTMCOOR:** N3741000 E702000 (vicinity) **TOPOQUAD:** Hand

COUNTY: Horry **BAYID:** 1801742124 **COMPLEX:** Yes **LALENGTH:** 1250 **PCNTDIST:** 0 **DISTTYPE:** None **SANDRIM:** SE, SW **SURRLAND:** PP, LO **BAYTYPE:** Pocosin **DISTCOMM:** Road through sand rim, power lines **CANOPY:** Gordonia lasianthus, Pinus serotina **SHRUB:** Lyonia lucida, Clethra alinifolia, Kalmia angustifolia, Cyrilla racemosa, Ilex coriacea, Vaccinium corymbosum, Zenobia pulverulenta **GRNDCOV:** No info **SIGNATEL:** Dionaea muscipula, Peltandra sagittifolia, Asclepia spedicillata, Ursus americana **OWNER:** No info **PROTPROJ:** No **FLDSURDAT:** No info **UTMCOOR:** N3741000 E702000 (vicinity) **TOPOQUAD:** Hand

COUNTY: Horry **BAYID:** 1801742418 **COMPLEX:** Yes **LALength:** 5833 **PCNTDIST:** 2 **DISTTYPE:** DI, PP **SANDRIM:** SE, SW **SURRLAND:** PP, LO **BAYTYPE:** Pocosin **DISTCOMM:** Road through sand rim, power lines **CANOPY:** Gordonia lasianthus, Pinus serotina **SHRUB:** Lyonia lucida, Clethra alnifolia, Kalmia angustifolia, Cyrilla racemosa, Ilex coriacea, Vaccinium corymbosum, Zenobia pulverulenta **GRNDCOV:** No info **SIGNATEL:** Dionaea muscipula, Peltandra sagittifolia, Asclepia spedicillata, Ursus americana **OWNER:** No info **PROTPROJ:** No **FLDSURDAT:** No info **UTMCOOR:** N3741000 E702000 (vicinity) **TOPOQUAD:** Hand

KERSHAW COUNTY

COUNTY: Kershaw **BAYID:** 1811462421 **COMPLEX:** No **LALength:** 1042 **PCNTDIST:** 9 **DISTTYPE:** RC, PP, LO, RM **SANDRIM:** SE, NE **SURRLAND:** RC, PP **BAYTYPE:** Nonalluvial Swamp **DISTCOMM:** Old road, some logs and stumps **CANOPY:** Pinus taeda, Acer rubrum, Nyssa biflora **SHRUB:** Vaccinium spp., Persea borbonia, Lyonia lucida, Decodon verticillata **GRNDCOV:** Sphagnum spp., Carex spp., Juncus spp. **SIGNATEL:** No info **OWNER:** No info **PROTPROJ:** No **FLDSURDAT:** 04/09/1985 **UTMCOOR:** N3805427 E560500 **TOPOQUAD:** Bethune

COUNTY: Kershaw **BAYID:** 1810882829 **COMPLEX:** No **LALength:** 2500 **PCNTDIST:** 13 **DISTTYPE:** RC, RE, RM, RD, ROW **SANDRIM:** Absent **SURRLAND:** RC, LO, RE **BAYTYPE:** Pond cypress pond **DISTCOMM:** Hwy 547 goes through eastern edge; lots of trash **CANOPY:** Taxodium ascendens, Nyssa spp. **SHRUB:** Cyrilla spp., Clethra spp., Itea spp. **GRNDCOV:** Woodwardia spp., Osmunda spp. **SIGNATEL:** No info **OWNER:** No info **PROTPROJ:** No **FLDSURDAT:** 04/09/1985 **UTMCOOR:** N3797366 E542122 **TOPOQUAD:** Camden North

COUNTY: Kershaw **BAYID:** 1811260932 **COMPLEX:** No **LALength:** 1458 **PCNTDIST:** 4 **DISTTYPE:** DI, LO, RM **SANDRIM:** SE, SW **SURRLAND:** RC, PP, RE **BAYTYPE:** Pond cypress pond, paired with 1811260832 **DISTCOMM:** Some stumps, some tree cutting fire on south side, charred forest, ditch on south side of large bay **CANOPY:** Taxodium ascendens (dominant), Nyssa spp., Liquidamber styraciflua **SHRUB:** Lyonia spp., Aronia spp., Leucothoe spp. **GRNDCOV:** Carex spp., Rhynchospora spp., Sphagnum spp. **SIGNATEL:** No info **OWNER:** No info **PROTPROJ:** No **FLDSURDAT:** 04/09/1985 **UTMCOOR:** N3798201 E544280 **TOPOQUAD:** Camden North

COUNTY: Kershaw **BAYID:** 1811462219 **COMPLEX:** No **LALength:** 625 **PCNTDIST:** 15 **DISTTYPE:** DI, RC, PP **SANDRIM:** Absent **SURRLAND:** RC, PP, RE **BAYTYPE:** Nonalluvial swamp **DISTCOMM:** Fence, ditch, old homesite, persistent day lily, strawberries, chinaberry **CANOPY:** Acer rubrum, Liquidamber styraciflua, Quercus nigra, Taxodium ascendens (sparse canopy) **SHRUB:** Nyssa biflora **GRNDCOV:** Carex spp., Rhynchospora **SIGNATEL:** No info **OWNER:** No info **PROTPROJ:** No **FLDSURDAT:** 04/09/1985 **UTMCOOR:** N3806120 E560232 **TOPOQUAD:** Bethune

COUNTY: Kershaw **BAYID:** 1811260832 **COMPLEX:** No **LALength:** 1042 **PCNTDIST:** 3 **DISTTYPE:** RC, PP, LO **SANDRIM:** Absent **SURRLAND:** RC, PP, RE **BAYTYPE:** Pond Cypress Pond, paired with 1811260932 **DISTCOMM:** Some stumps, tree cutting, fire on south side, charred forest, ditch on south side of large bay **CANOPY:** Taxodium ascendens (dominant), Nyssa biflora, Liquidamber styraciflua **SHRUB:** Lyonia spp., Aronia arbutifolia, Leucothoe spp. **GRNDCOV:** Carex spp., Rhynchospora spp., Sphagnum spp. **SIGNATEL:** No info **OWNER:** No info **PROTPROJ:** No **FLDSURDAT:** 05/09/1985 **UTMCOOR:** N3798171 E544012 **TOPOQUAD:** Camden North

LEE COUNTY

COUNTY: Lee **BAYID:** 1810301320 **COMPLEX:** No **LALENGTH:** 2500 **PCNTDIST:** 10 **DISTTYPE:** DI, RC, RE, LO, RM **SANDRIM:** Absent **SURRLAND:** RC, LO, RE **BAYTYPE:** Pond cypress savannah **DISTCOMM:** Little disturbance **CANOPY:** Taxodium ascendens **SHRUB:** Myrica cerifera, Ilex myrtifolia **GRNDCOV:** Carex spp., Rhynchospora spp. **SIGNATEL:** Oxypolis canbyi **OWNER:** No info **PROTPROJ:** Yes **FLDSURDAT:** 04/18/1985 **UTMCOOR:** N3769744 E578585 **TOPOQUAD:** Elliott

COUNTY: Lee **BAYID:** 1810302015 **COMPLEX:** No **LALENGTH:** 1666 **PCNTDIST:** 50 **DISTTYPE:** RC, LO **SANDRIM:** Absent **SURRLAND:** RC, LO **BAYTYPE:** Pond cypress savannah **DISTCOMM:** Some side ditches **CANOPY:** Pinus serotina, Pinus taeda, Pinus p., Taxodium ascendens **SHRUB:** Myrica cerifera, Smilax spp. **GRNDCOV:** Vitis spp., Drosera spp., Pinguicula spp. Arnicaacaulis, Chaptalia tomentosa **SIGNATEL:** No info **OWNER:** No info **PROTPROJ:** Yes **FLDSURDAT:** 04/18/1985 **UTMCOOR:** N3770805 E580396 **TOPOQUAD:** Lynchburg, Elliot

LEXINGTON COUNTY

COUNTY: Lexington **BAYID:** 1780422025 **COMPLEX:** No **LALENGTH:** 833 **PCNTDIST:** 3 **DISTTYPE:** DI **SANDRIM:** Absent **SURRLAND:** RC, LO **BAYTYPE:** Open water lake **DISTCOMM:** road on north side **CANOPY:** Nyssa biflora (in clumps around center), Acer rubrum, Quercus nigra (around edge) **SHRUB:** Extensive: Lyonia lucida, Vaccinium spp., Leucothum racemosa, Cyrilla racemosa, Smilax laurifolia **GRNDCOV:** Mitchella repens (in woods), Panicum spp. (at edge), Hypeuium spp., Utricularia spp., Nymphaea odorata **SIGNATEL:** No info **OWNER:** No info **PROTPROJ:** No **FLDSURDAT:** 05/10/1984 **UTMCOOR:** N3739591 E482732 **TOPOQUAD:** Pelion East

MARION COUNTY

COUNTY: Marion **BAYID:** 1780102425 **COMPLEX:** No **LALENGTH:** 1042 **PCNTDIST:** 4 **DISTTYPE:** DI, PP **SANDRIM:** Absent **SURRLAND:** PP, LO **BAYTYPE:** No info **DISTCOMM:** No info **CANOPY:** No info **SHRUB:** No info **GRNDCOV:** No info **SIGNATEL:** No info **OWNER:** No info **PROTPROJ:** No **FLDSURDAT:** No info **UTMCOOR:** N3733354 E661543 **TOPOQUAD:** Outland

COUNTY: Marion **BAYID:** 1780102323 **COMPLEX:** No **LALENGTH:** 1458 **PCNTDIST:** 4 **DISTTYPE:** DI, PP **SANDRIM:** Absent **SURRLAND:** PP, LO **BAYTYPE:** No info **DISTCOMM:** No info **CANOPY:** No info **SHRUB:** No info **GRNDCOV:** No info **SIGNATEL:** No info **OWNER:** No info **PROTPROJ:** No **FLDSURDAT:** No info **UTMCOOR:** N3733872 E661128 **TOPOQUAD:** Outland

COUNTY: Marion **BAYID:** 1780122434 **COMPLEX:** No **LALENGTH:** 1042 **PCNTDIST:** 6 **DISTTYPE:** PP, RM **SANDRIM:** Absent **SURRLAND:** PP, LO **BAYTYPE:** No info **DISTCOMM:** No info **CANOPY:** No info **SHRUB:** No info **GRNDCOV:** No info **SIGNATEL:** No info **OWNER:** No info **PROTPROJ:** No **FLDSURDAT:** No info **UTMCOOR:** N3738317 E661244 **TOPOQUAD:** Snow Island

COUNTY: Marion **BAYID:** 1780122334 **COMPLEX:** No **LALENGTH:** 1458 **PCNTDIST:** 7 **DISTTYPE:** PP, RM **SANDRIM:** Absent **SURRLAND:** PP, LO **BAYTYPE:** No info **DISTCOMM:** No info **CANOPY:** No info **SHRUB:** No info **GRNDCOV:** No info **SIGNATEL:** No info **OWNER:** No info **PROTPROJ:** No **FLDSURDAT:** No info **UTMCOOR:** N3738244 E661012 **TOPOQUAD:** Snow Island

COUNTY: Marion **BAYID:** 1780103424 **COMPLEX:** No **LALENGTH:** 3958 **PCNTDIST:** 8 **DISTTYPE:** RC, PP, LO, RO **SANDRIM:** Absent **SURRLAND:** PP, LO **BAYTYPE:** Pond pine woodlands, Pocosin **DISTCOMM:** Power line, some roads **CANOPY:** Nyssa biflora, Pinus serotina, Gordonia lasianthus, Acer rubrum **SHRUB:** Myrica cerifera, Lyonia lucida, Lyonia mariana, Vaccinium corymbosum, Kalmia angustifolia, Ilex galbra, Ilex coriacea, Cyrilla racemosa **GRNDCOV:** Osmunda cinnamomeum, Sphagnum spp. **SIGNATEL:** No info **OWNER:** No info **PROTPROJ:** No **FLDSURDAT:** No info **UTMCOOR:** N3733652 E664000 **TOPOQUAD:** Yauhannah

COUNTY: Marion **BAYID:** 1780102311 **COMPLEX:** No **LALENGTH:** 1458 **PCNTDIST:** 1 **DISTTYPE:** RM **SANDRIM:** Absent **SURRLAND:** PP, LO **BAYTYPE:** No info **DISTCOMM:** No info **CANOPY:** No info **SHRUB:** No info **GRNDCOV:** No info **SIGNATEL:** No info **OWNER:** No info **PROTPROJ:** No **FLDSURDAT:** No info **UTMCOOR:** N3737079 E661116 **TOPOQUAD:** Snow Island

COUNTY: Marion **BAYID:** 1780202407 **COMPLEX:** No **LALENGTH:** 2708 **PCNTDIST:** 7 **DISTTYPE:** RC, LO, ROW **SANDRIM:** SE, SW, NE **SURRLAND:** RC, LO **BAYTYPE:** Pond pine woodlands, Pocosin **DISTCOMM:** Power line, some roads **CANOPY:** Nyssa biflora, Pinus serotina, Gordonia lasianthus, Acer rubrum **SHRUB:** Myrica cerifera, Lyonia lucida, Lyonia mariana, Vaccinium corymbosum, Kalmia angustifolia, Ilex galbra, Ilex coriacea, Cyrilla racemosa **GRNDCOV:** Osmunda cinnamomeum, Sphagnum spp. **SIGNATEL:** No info **OWNER:** No info **PROTPROJ:** No **FLDSURDAT:** No info **UTMCOOR:** N3772667 E659129 **TOPOQUAD:** Centenary

COUNTY: Marion **BAYID:** 1780202013 **COMPLEX:** No **LALENGTH:** 5833 **PCNTDIST:** 2 **DISTTYPE:** RC, LO **SANDRIM:** SE, SW, NE **SURRLAND:** PP, LO **BAYTYPE:** Pond pine woodlands, Pocosin **DISTCOMM:** Power line, some roads **CANOPY:** Nyssa biflora, Pinus serotina, Gordonia lasianthus, Acer rubrum **SHRUB:** Myrica cerifera, Lyonia lucida, Lyonia mariana, Vaccinium corymbosum, Kalmia angustifolia, Ilex galbra, Ilex coriacea, Cyrilla racemosa **GRNDCOV:** Osmunda cinnamomeum, Sphagnum spp. **SIGNATEL:** No info **OWNER:** No info **PROTPROJ:** No **FLDSURDAT:** No info **UTMCOOR:** N3773479 E660651 **TOPOQUAD:** Centenary

COUNTY: Marion **BAYID:** 1780202309 **COMPLEX:** No **LALENGTH:** 5416 **PCNTDIST:** 2 **DISTTYPE:** LO, ROW **SANDRIM:** NE, NW **SURRLAND:** LO **BAYTYPE:** Pond pine woodlands, Pocosin **DISTCOMM:** Power line, some roads **CANOPY:** Nyssa biflora, Pinus serotina, Gordonia lasianthus, Acer rubrum **SHRUB:** Myrica cerifera, Lyonia lucida, Lyonia mariana, Vaccinium corymbosum, Kalmia angustifolia, Ilex galbra, Ilex coriacea, Cyrilla racemosa **GRNDCOV:** Osmunda cinnamomeum, Sphagnum spp. **SIGNATEL:** No info **OWNER:** No info **PROTPROJ:** No **FLDSURDAT:** No info **UTMCOOR:** N3772760 E659756 **TOPOQUAD:** Centenary

COUNTY: Marion **BAYID:** 1780201716 **COMPLEX:** No **LALENGTH:** 3541 **PCNTDIST:** 3 **DISTTYPE:** DI, RC **SANDRIM:** SE, SW **SURRLAND:** RC, LO **BAYTYPE:** Pond pine woodlands, Pocosin **DISTCOMM:** Power line, some roads **CANOPY:** Nyssa biflora, Pinus serotina, Gordonia lasianthus, Acer rubrum **SHRUB:** Myrica cerifera, Lyonia lucida, Lyonia mariana, Vaccinium corymbosum, Kalmia angustifolia, Ilex galbra, Ilex coriacea, Cyrilla racemosa **GRNDCOV:** Osmunda cinnamomeum, Sphagnum spp. **SIGNATEL:** No info **OWNER:** No info **PROTPROJ:** No **FLDSURDAT:** No info **UTMCOOR:** N3773864 E660698 **TOPOQUAD:** Centenary

COUNTY: Marion **BAYID:** 1780102014 **COMPLEX:** No **LALENGTH:** 2083 **PCNTDIST:** 2 **DISTTYPE:** LO **SANDRIM:** SE **SURRLAND:** LO **BAYTYPE:** No info **DISTCOMM:** No info **CANOPY:** No info **SHRUB:** No info **GRNDCOV:** No info **SIGNATEL:** No info **OWNER:** No info **PROTPROJ:** No **FLDSURDAT:** No info **UTMCOOR:** N3736250 E660232 **TOPOQUAD:** Snow Island

COUNTY: Marion **BAYID:** 1780201519 **COMPLEX:** No **LALength:** 3333 **PCNTDIST:** 3 **DISTTYPE:** DI, RC, LO **SANDRIM:** SE **SURRLAND:** RC, LO **BAYTYPE:** Pond pine woodlands, Pocosin **DISTCOMM:** Power line, some roads **CANOPY:** Nyssa biflora, Pinus serotina, Gordonia lasianthus, Acer rubrum **SHRUB:** Myrica cerifera, Lyonia lucida, Lyonia mariana, Vaccinium corymbosum, Kalmia angustifolia, Ilex galbra, Ilex coriacea, Cyrilla racemosa **GRNDCOV:** Osmunda cinnamomeum, Sphagnum spp. **SIGNATEL:** No info **OWNER:** No info **PROTPROJ:** No **FLDSURDAT:** No info **UTMCOOR:** N3775097 E660729 **TOPOQUAD:** Centenary

COUNTY: Marion **BAYID:** 1780222634 **COMPLEX:** No **LALength:** 2083 **PCNTDIST:** 4 **DISTTYPE:** DI, LO **SANDRIM:** Absent **SURRLAND:** LO **BAYTYPE:** Pond pine woodlands, pocosin **DISTCOMM:** Power lines, some roads **CANOPY:** Nyssa biflora, Pinus serotina, Gordonia lasianthus, Acer rubrum **SHRUB:** Myrica cerifera, Lyonia lucida, Lyonia mariana, Vaccinium corymbosum, Kalmia angustifolia, Ilex galbra, Ilex coriacea, Cyrilla racemosa **GRNDCOV:** Osmunda cinnamomeum, Sphagnum spp. **SIGNATEL:** No info **OWNER:** No info **PROTPROJ:** No **FLDSURDAT:** No info **UTMCOOR:** N3775534 E661054 **TOPOQUAD:** Centenary

COUNTY: Marion **BAYID:** 1780102523 **COMPLEX:** No **LALength:** 1458 **PCNTDIST:** 4 **DISTTYPE:** DI, PP **SANDRIM:** Absent **SURRLAND:** PP, LO **BAYTYPE:** No info **DISTCOMM:** No info **CANOPY:** No info **SHRUB:** No info **GRNDCOV:** No info **SIGNATEL:** No info **OWNER:** No info **PROTPROJ:** No **FLDSURDAT:** No info **UTMCOOR:** N3733799 E661671 **TOPOQUAD:** Outland

COUNTY: Marion **BAYID:** 1780102822 **COMPLEX:** No **LALength:** 3541 **PCNTDIST:** 6 **DISTTYPE:** RC, PP, LO, RM **SANDRIM:** Absent **SURRLAND:** PP, LO **BAYTYPE:** Nonalluvial swamp **DISTCOMM:** Borrow pits **CANOPY:** Taxodium ascendens, Nyssa biflora, Gordonia lasianthus **SHRUB:** Lyonia lucida, Lyonia mariana, Cyrilla racemosa, Clethra alnifolia **GRNDCOV:** No info **SIGNATEL:** No info **OWNER:** No info **PROTPROJ:** No **FLDSURDAT:** No info **UTMCOOR:** N3734384 E662354 **TOPOQUAD:** Outland

COUNTY: Marion **BAYID:** 1780102519 **COMPLEX:** No **LALength:** 3125 **PCNTDIST:** 5 **DISTTYPE:** DI, PP, RM **SANDRIM:** Absent **SURRLAND:** PP, LO **BAYTYPE:** Nonalluvial swamp **DISTCOMM:** Borrow pits **CANOPY:** Taxodium ascendens, Nyssa biflora, Gordonia lasianthus **SHRUB:** Lyonia lucida, Lyonia mariana, Cyrilla racemosa, Clethra alnifolia **GRNDCOV:** No info **SIGNATEL:** No info **OWNER:** No info **PROTPROJ:** No **FLDSURDAT:** No info **UTMCOOR:** N3734915 E661720 **TOPOQUAD:** Outland

COUNTY: Marion **BAYID:** 1780102018 **COMPLEX:** No **LALength:** 1250 **PCNTDIST:** 3 **DISTTYPE:** PP, RM **SANDRIM:** Absent **SURRLAND:** PP, LO **BAYTYPE:** No info **DISTCOMM:** No info **CANOPY:** No info **SHRUB:** No info **GRNDCOV:** No info **SIGNATEL:** No info **OWNER:** No info **PROTPROJ:** No **FLDSURDAT:** No info **UTMCOOR:** N3735348 E660341 **TOPOQUAD:** Outland

COUNTY: Marion **BAYID:** 1780102815 **COMPLEX:** No **LALength:** 1250 **PCNTDIST:** 6 **DISTTYPE:** DI, PP., LO **SANDRIM:** Absent **SURRLAND:** PP, LO **BAYTYPE:** Pond cypress pond **DISTCOMM:** Shotgun shells, truck lane on north end **CANOPY:** Taxodium ascendens, Nyssa biflora **SHRUB:** Ilex myrtifolia, Lyonia lucida, Cyrilla racemosa **GRNDCOV:** Dorsera spp., Rhexia aristosa, Scleria baldwinii, Panicum spp., Centella asiatica **SIGNATEL:** Rhexia aristosa, Scleria baldwinii **OWNER:** No info **PROTPROJ:** No **FLDSURDAT:** No info **UTMCOOR:** N3735402 E662256 **TOPOQUAD:** Yauhannah

COUNTY: Marion **BAYID:** 1780102212 **COMPLEX:** No **LALength:** 1458 **PCNTDIST:** 2 **DISTTYPE:** PP, RM **SANDRIM:** SE **SURRLAND:** PP, LO **BAYTYPE:** No info **DISTCOMM:** No info **CANOPY:** No info **SHRUB:** No info **GRNDCOV:** No info **SIGNATEL:** No info **OWNER:** No info **PROTPROJ:** No **FLDSURDAT:** No info **UTMCOOR:** N3736616 E660866 **TOPOQUAD:** Snow Island

COUNTY: Marion **BAYID:** 1780102908 **COMPLEX:** No **LALENGTH:** 2291 **PCNTDIST:** 3 **DISTTYPE:** RC,RTB **SANDRIM:** Absent **SURRLAND:** RC, PP, LO **BAYTYPE:** Pond pine woodland, pocosin **DISTCOMM:** Power line, some roads **CANOPY:** Nyssa biflora, Pinus serotina, Gordonia lasianthus, Acer rubrum **SHRUB:** Myrica cerifera, Lyonia lucida, Lyonia mariana, Vaccinium corymbosum, Kalmia angustifolia, Ilex galbra, Ilex coriacea, Cyrilla racemosa **GRNDCOV:** Osmunda cinnamomeum, Sphagnum spp. **SIGNATEL:** No info **OWNER:** No info **PROTPROJ:** No **FLDSURDAT:** No info **UTMCOOR:** N3737805 E662427 **TOPOQUAD:** Dongola

COUNTY: Marion **BAYID:** 1780102814 **COMPLEX:** No **LALENGTH:** 417 **PCNTDIST:** 6 **DISTTYPE:** PP, LO **SANDRIM:** Absent **SURRLAND:** PP, LO **BAYTYPE:** Pond cypress pond, dried up **DISTCOMM:** Shotgun shells, fire lane on north side **CANOPY:** Taxodium ascendens, Nyssa biflora **SHRUB:** Ilex myrtifolia, Lyonia lucida, Cyrilla racemosa **GRNDCOV:** Dorsera spp., Rhexia aristosa, Scleria baldwinii, Panicum spp., Centella asiatica **SIGNATEL:** Rhexia aristosa, Scleria baldwinii **OWNER:** No info **PROTPROJ:** No **FLDSURDAT:** No info **UTMCOOR:** N3735799 E662268 **TOPOQUAD:** Dongola

COUNTY: Marion **BAYID:** 1780102209 **COMPLEX:** No **LALENGTH:** 1666 **PCNTDIST:** 1 **DISTTYPE:** RM **SANDRIM:** Absent **SURRLAND:** PP, LO **BAYTYPE:** No info **DISTCOMM:** No info **CANOPY:** No info **SHRUB:** No info **GRNDCOV:** No info **SIGNATEL:** No info **OWNER:** No info **PROTPROJ:** No **FLDSURDAT:** No info **UTMCOOR:** N3737524 E660817 **TOPOQUAD:** Snow Island

COUNTY: Marion **BAYID:** 1780102510 **COMPLEX:** No **LALENGTH:** 1250 **PCNTDIST:** 1 **DISTTYPE:** PP **SANDRIM:** Absent **SURRLAND:** PP, LO **BAYTYPE:** No info **DISTCOMM:** No info **CANOPY:** No info **SHRUB:** No info **GRNDCOV:** No info **SIGNATEL:** No info **OWNER:** No info **PROTPROJ:** No **FLDSURDAT:** No info **UTMCOOR:** N3737220 E661421 **TOPOQUAD:** Snow Island

COUNTY: Marion **BAYID:** 1780102914 **COMPLEX:** No **LALENGTH:** 625 **PCNTDIST:** 3 **DISTTYPE:** DI, LO **SANDRIM:** Absent **SURRLAND:** PP, LO **BAYTYPE:** Pond cypress pond, dried up **DISTCOMM:** Shotgun shells, fire lane on the north end **CANOPY:** Taxodium ascendens, Nyssa biflora **SHRUB:** Ilex myrtifolia, Lyonia lucida, Cyrilla racemosa **GRNDCOV:** Dorsera spp., Rhexia aristosa, Scleria baldwinii, Panicum spp., Centella asiatica **SIGNATEL:** Rhexia aristosa, Scleria baldwinii **OWNER:** No info **PROTPROJ:** No **FLDSURDAT:** No info **UTMCOOR:** N3735933 E662506 **TOPOQUAD:** Dongola

COUNTY: Marion **BAYID:** 1780102117 **COMPLEX:** No **LALENGTH:** 833 **PCNTDIST:** 3 **DISTTYPE:** DI, PP **SANDRIM:** Absent **SURRLAND:** No info **BAYTYPE:** No info **DISTCOMM:** No info **CANOPY:** No info **SHRUB:** No info **GRNDCOV:** No info **SIGNATEL:** No info **OWNER:** No info **PROTPROJ:** No **FLDSURDAT:** No info **UTMCOOR:** N3735134 E660500 **TOPOQUAD:** Outland

COUNTY: Marion **BAYID:** 1780102324 **COMPLEX:** No **LALENGTH:** 1042 **PCNTDIST:** 3 **DISTTYPE:** PP **SANDRIM:** Absent **SURRLAND:** PP, LO **BAYTYPE:** No info **DISTCOMM:** No info **CANOPY:** No info **SHRUB:** No info **GRNDCOV:** No info **SIGNATEL:** No info **OWNER:** No info **PROTPROJ:** No **FLDSURDAT:** No info **UTMCOOR:** N3733610 E661360 **TOPOQUAD:** Outland

RICHLAND COUNTY

COUNTY: Richland **BAYID:** 2780541309 **COMPLEX:** No **LALENGTH:** 1042 **PCNTDIST:** 11 **DISTTYPE:** RC, RE, RM **SANDRIM:** Absent **SURRLAND:** RC, LO, RE **BAYTYPE:** Nonalluvial swamp, depression meadow **DISTCOMM:** Ditch, probably logged at south end, trash **CANOPY:** Nyssa biflora, Populus heterophylla, Diospyros virginiana **SHRUB:** Cephalanthus o., Myrica cerifera, Magnolia virginiana, Ilex myrifolia **GRNDCOV:** Rhynchospora spp., Ludwigia spp. **SIGNATEL:** Rhexia aristosa, Oxypolis canbyi **OWNER:** No info **PROTPROJ:** No **FLDSURDAT:** 09/07/1984 **UTMCOOR:** N3745896 E519961 **TOPOQUAD:** Gadsden

COUNTY: Richland **BAYID:** 2780662123 **COMPLEX:** No **LALength:** 833 **PCNTDIST:** 13 **DISTTYPE:** DI, RC, RE, RM **SANDRIM:** Absent **SURRLAND:** RC, LO, RE **BAYTYPE:** Nonalluvial swamp **DISTCOMM:** Currently being logged around edge **CANOPY:** Nyssa biflora, Liquidamber spp., Diospyros virginiana **SHRUB:** Cephalanthus occidentalis **GRNDCOV:** Solidaga m., Juncus c., Pluchea foetida, Erianthus spp., Eupatorium spp. **SIGNATEL:** Rhexia aristosa **OWNER:** No info **PROTPROJ:** No **FLDSURDAT:** 09/27/1984 **UTMCOOR:** N3753854 E515470 **TOPOQUAD:** Congaree

COUNTY: Richland **BAYID:** 2780662025 **COMPLEX:** No **LALength:** 1042 **PCNTDIST:** 7 **DISTTYPE:** RC, RM **SANDRIM:** Absent **SURRLAND:** RC, LO, RE **BAYTYPE:** Swamp tupelo pond **DISTCOMM:** Ditch, trash **CANOPY:** Nyssa biflora, Liquidamber styraciflua, Diospyros virginiana **SHRUB:** no info **GRNDCOV:** Pluchea foetida, Leersia spp., Proserpinaca spp. **SIGNATEL:** Rhexia aristosa **OWNER:** No info **PROTPROJ:** No **FLDSURDAT:** 09/27/1984 **UTMCOOR:** N3753500 E515323 **TOPOQUAD:** Congaree

COUNTY: Richland **BAYID:** 2780541114 **COMPLEX:** No **LALength:** 1042 **PCNTDIST:** 39 **DISTTYPE:** DI, RC, RO **SANDRIM:** Absent **SURRLAND:** RC, RE **BAYTYPE:** Grass sedge **DISTCOMM:** Train track bisects lower 1/4 **CANOPY:** None **SHRUB:** Nyssa biflora, Cephalanthus o. **GRNDCOV:** Ludwigia spathulata, Rhexia aristosa, Rhynchospora tracyi, Pluchea foetida **SIGNATEL:** Rhexia aristosa **OWNER:** No info **PROTPROJ:** No **FLDSURDAT:** 09/07/1984 **UTMCOOR:** N3747207 E520341 **TOPOQUAD:** Gadsden

SALUDA COUNTY

COUNTY: Saluda **BAYID:** 1770243415 **COMPLEX:** No **LALength:** 1250 **PCNTDIST:** 90 **DISTTYPE:** DI, RC, RM, LO **SANDRIM:** Absent **SURRLAND:** RC, LO **BAYTYPE:** Depression meadow **DISTCOMM:** No info **CANOPY:** Liquidamber styraciflua, Nyssa biflora **SHRUB:** Cephalanthus d. **GRNDCOV:** Panicum. h., Ludwigia spp. (very abundant in center), Nymphoides spp., Cabomba spp., Eleocharis spp., Boltonia spp., Scirpus spp., Potamogeton spp. **SIGNATEL:** No info **OWNER:** No info **PROTPROJ:** No **FLDSURDAT:** 08/03/1987 **UTMCOOR:** N3749665 E445543 **TOPOQUAD:** Batesburg

SUMTER COUNTY

COUNTY: Sumter **BAYID:** 1790471721 **COMPLEX:** No **LALength:** 666690 **PCNTDIST:** 4 **DISTTYPE:** DI, PP, LO, RD **SANDRIM:** NE **SURRLAND:** RC, PP, LO **BAYTYPE:** Pocosin, Bay forest **DISTCOMM:** Some rim disturbance, planted pines, and road **CANOPY:** Gordonia lasianthus, Pinus serotina **SHRUB:** Vaccinium spp., Lyonia lucida, Lyonia mariana, Clethra alnifolia, Cyrilla racemosa, Ilex spp., Smilax laurifolia, Kalmia angustifolia, Lyonia m., Sorbus spp. **GRNDCOV:** Osmunda spp. **SIGNATEL:** No info **OWNER:** No info **PROTPROJ:** No **FLDSURDAT:** 06/12/1985 **UTMCOOR:** N3735280 E548305 **TOPOQUAD:** Privateer

COUNTY: Sumter **BAYID:** 1790652014 **COMPLEX:** No **LALength:** 2083 **PCNTDIST:** 9 **DISTTYPE:** DI, RC, PP **SANDRIM:** Absent **SURRLAND:** RC, PP, LO **BAYTYPE:** Pond cypress pond **DISTCOMM:** Some trash **CANOPY:** Taxodium ascendens **SHRUB:** Cephalanthus occidentalis, Quercus virginiana, Quercus nigra, Cornus florida **GRNDCOV:** No info **SIGNATEL:** No info **OWNER:** No info **PROTPROJ:** No **FLDSURDAT:** 05/16/1985 **UTMCOOR:** N3765738 E555274 **TOPOQUAD:** Dalzell

WILLIAMSBURG COUNTY

COUNTY: Williamsburg **BAYID:** 1780772623 **COMPLEX:** No **LALength:** 1875 **PCNTDIST:** 8
DISTTYPE: DI, LO, RM **SANDRIM:** Absent **SURRLAND:** RC, LO **BAYTYPE:** Pond cypress pond
DISTCOMM: Burned **CANOPY:** Pinus taeda, Liquidamber styraciflua, Acer rubrum, Taxodium ascendens
SHRUB: Ilex myrtifolia, Lyonia lucida, Leucothoe racemosa **GRNDCOV:** Carex spp., Rhynchospora spp.,
Panicum spp. **SIGNATEL:** No info **OWNER:** No info **PROTPROJ:** No **FLDSURDAT:** 09/18/1986
UTMCOOR: N3737610 E620665 **TOPOQUAD:** Lake City East

COUNTY: Williamsburg **BAYID:** 1781271708 **COMPLEX:** No **LALength:** 833 **PCNTDIST:** 10
DISTTYPE: RC, LO **SANDRIM:** Absent **SURRLAND:** RC, LO **BAYTYPE:** Pond cypress savannah
DISTCOMM: Gouged places **CANOPY:** Taxodium ascendens **SHRUB:** Hypericum spp., Ilex myrtifolia
GRNDCOV: Erianthis spp., Eupatorium spp., Aristida spp., Pluchea foetida, Polygala spp., Ludwigia pilosa,
Osmunda spp., Lycopus spp., Oxypolis canbyi, Lobelia boykinii, Agalinis 1. **SIGNATEL:** Oxypolis canbyi,
Lobelia boykinii, Agalinis 1. **OWNER:** No info **PROTPROJ:** No **FLDSURDAT:** 07/11/1986 **UTMCOOR:**
N3716329 E605183 **TOPOQUAD:** Salters

COUNTY: Williamsburg **BAYID:** 1780872508 **COMPLEX:** No **LALength:** 833 **PCNTDIST:** 50
DISTTYPE: PP, LO **SANDRIM:** Absent **SURRLAND:** PP, RC, LO **BAYTYPE:** Pond cypress pond
DISTCOMM: No info **CANOPY:** Taxodium ascendens, Nyssa biflora, Acer rubrum, Liquidamber styraciflua,
EDGE: Quercus marilandica, Vaccinium spp., Myrica cerifera, Pinus taeda **SHRUB:** Cyrilla racemosa,
Magnolia virginiana, Clethra spp., Leucothoe racemosa, Myrica cerifera, Cephalanthus o. **GRNDCOV:** Rhexia
virginiana, Osmunda spp., Sphagnum spp., Polygala spp., Lycopus spp., Euthamia b., Clethra alnifolia,
Lyonia spp. **SIGNATEL:** No info **OWNER:** No info **PROTPROJ:** No **FLDSURDAT:** No info **UTMCOOR:**
N3697030 E620274 **TOPOQUAD:** Trio

