

THE "CLAY SUBSOIL" CAROLINA BAYS OF NORTH CAROLINA

Timothy D. Nifong
Department of Botany
The University of North Carolina

Prepared for the
Proposed Natural Heritage of North Carolina Project
Department of Botany, The University of North Carolina
and the
North Carolina Nature Conservancy
April, 1982

NORTH CAROLINA NATURAL HERITAGE
SITE INFORMATION SUMMARY

I. GENERAL INFORMATION

- A. Name: Arabia Bay
- B. Province: Coastal Plain
- C. County: Hoke
- D. USGS Quad: Parkton (1972)
- E. Coordinates: 34°57'00"N, 79°07'30"W
- F. Location: South of Co. Rd. 1003 ca. 0.1 mi. east of Arabia
- G. Elevation: 67 m (220 ft.)
- H. Size: 5.7 ha (14 a.)
- I. Land Use Status:
 - 1. Site Usage Category - 2
 - 2. Site Integrity - 4
 - 3. % Use of Surrounding Land - 30-60-10
- J. Ownership:
 - 1.
 - 2.
 - 3.
 - 4.
 - 5.

II. SIGNIFICANCE STATUS

- A. National
- B. Regional
- C. State
- D. Provincial
- E. Local

III. PRESERVE TYPE

- A. Natural Heritage
- B. Multiple Use
- C. Rare Population Habitat
- D. Geologic
- E. Educational

IV. ABIOTIC FEATURES

- A. Geologic Stratigraphy: Coharie/Black Creek (Stephenson 1912/Stuckey 1958)
- B. Rock - Sediment Type: interbedded sandy clays, sands, & gravels (Stephenson 1912)
- C. Soil Type: Typic Fragiaquult
- D. Hydrologic Site Type: wet-mesic to wet-hydric
- E. Topographic Site Type: open, variously exposed, nearly level to gently sloping basin of a Carolina bay

V. BIOTIC FEATURES

- A. Plant Community Cover Class: Cypress - gum savannah
 - 1. Plant Community Type(s) -
 - a. Andropogon virginicus--Mixed graminoids
 - b. Taxodium ascendens
 - c. Taxodium ascendens/Andropogon virginicus
 - d. (Taxodium ascendens)/Andropogon virginicus--Mixed graminoids
 - e. Taxodium ascendens/Liquidambar styraciflua/Dichanthelium sp.
 - f. Taxodium ascendens/ Pluchea rosea/Dichanthelium sp.
 - g. Taxodium ascendens--Nyssa sylvatica var. biflora/Liquidambar styraciflua
 - h.
 - i.
 - j.

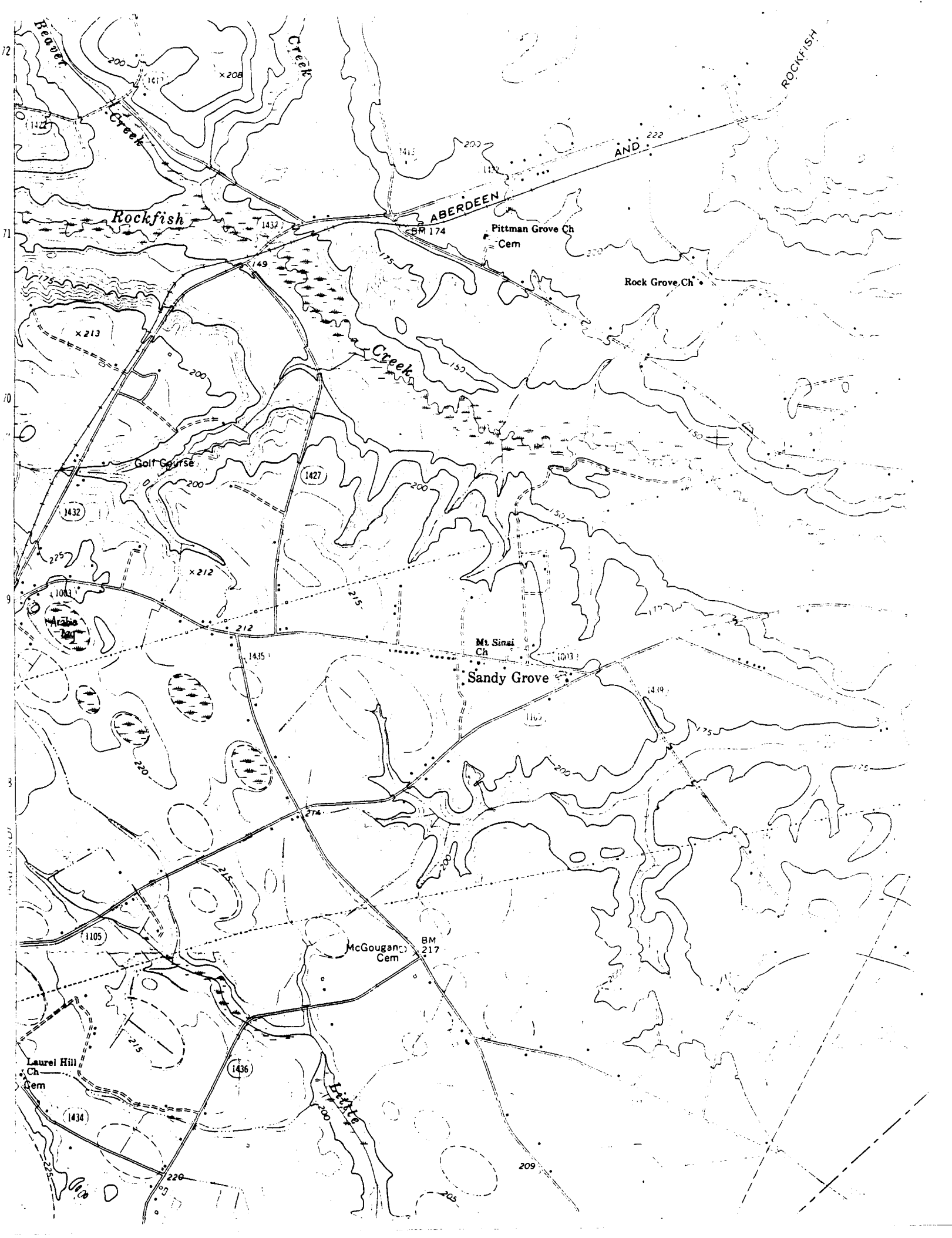
2. Special Plant Population(s) -
 - a. *Pluchea rosea*
 - b.
 - c.
 - d.
 - e.
- B. Significant Animal Breeding Habitat: 2
- C. Endangered and Threatened Species:
 1. *Ilex amelanchier* - P9 (N.C. Plant Conservation Board)
 - 2.
 - 3.
 - 4.
 - 5.

VI. HUMANISTIC FEATURES

- A. Aesthetic Value: 4
- B. Scenic Value:
- C. Scientific Value: 4
- D. Historical Value:

VII. ADDITIONAL SITE DESCRIPTION OR COMMENTS

This bay represents a relatively high quality savannah site as a result of frequent fires and other natural or artificial controls of invading successional woody species. A number of old growth pond cypresses (*Taxodium ascendens*) and swamp black gums (*Nyssa sylvatica* var. *biflora*) occur here.



72
71
70
9
8
7
6
5
4
3
2
1
0

Beaver Creek
Rockfish Creek
Rockfish
Creek
Golf Course
Sandy Grove
McGougan Cem
Laurel Hill Ch Cem
Pittman Grove Ch Cem
Rock Grove Ch
Mt. Sinai Ch
AND
ABERDEEN
1417
x208
1413
200
1437
BM 174
149
175
150
x213
200
1427
200
1432
225
x212
1003
212
1435
215
274
1105
215
1434
220
209
205