



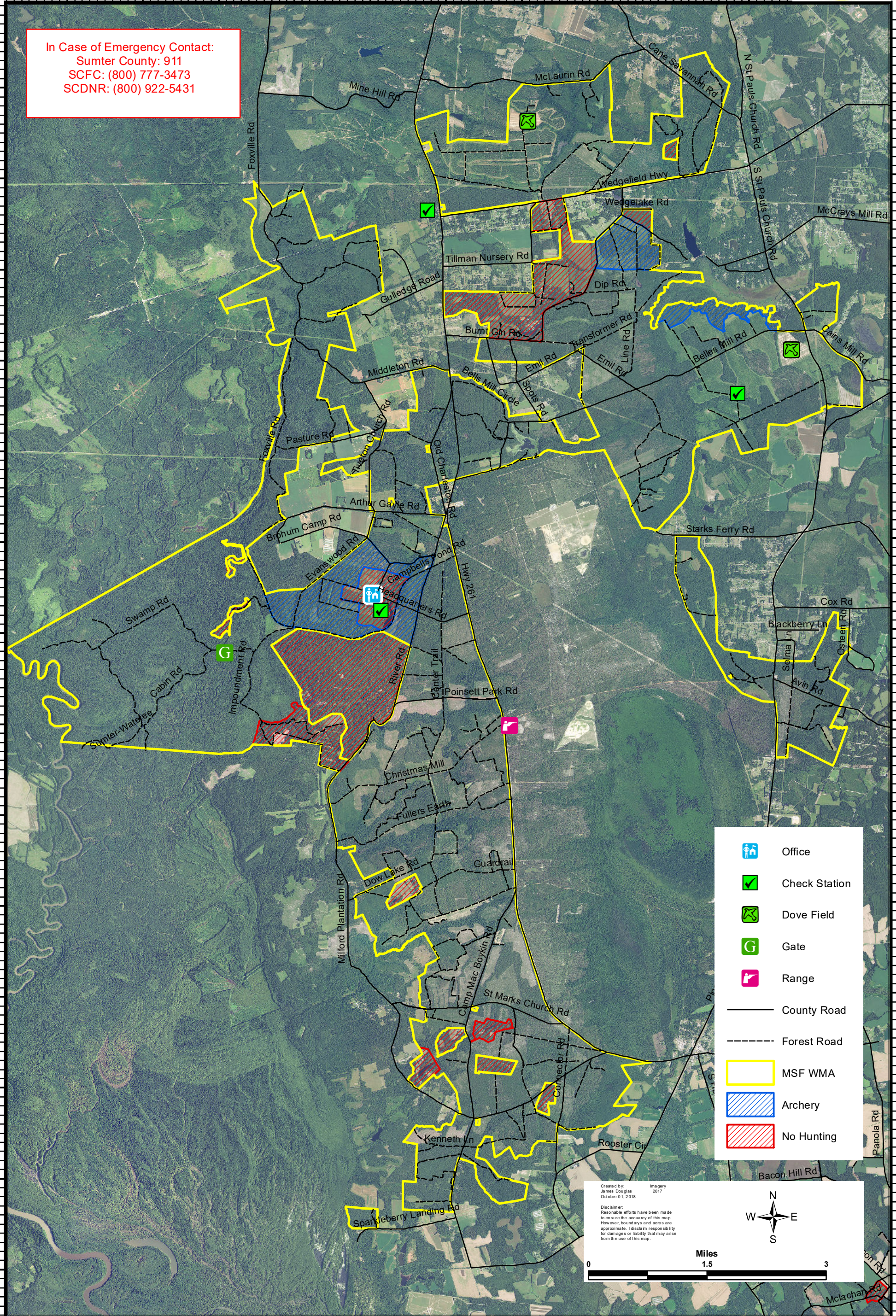
MANCHESTER STATE FOREST WMA



80°35'W 80°34'W 80°33'W 80°32'W 80°31'W 80°30'W 80°29'W 80°28'W 80°27'W

In Case of Emergency Contact:
Sumter County: 911
SCFC: (800) 777-3473
SCDNR: (800) 922-5431

33°55'N
33°54'N
33°53'N
33°52'N
33°51'N
33°50'N
33°49'N
33°48'N
33°47'N
33°46'N
33°45'N
33°44'N
33°43'N
33°42'N



- Office
- Check Station
- Dove Field
- Gate
- Range
- County Road
- Forest Road
- MSF WMA
- Archery
- No Hunting

Created by: James Douglas
Imagery: 2017
October 01, 2018
Disclaimer: Reasonable efforts have been made to ensure the accuracy of this map. However, boundaries and acres are approximate. I disclaim responsibility for damages or liability that may arise from the use of this map.

